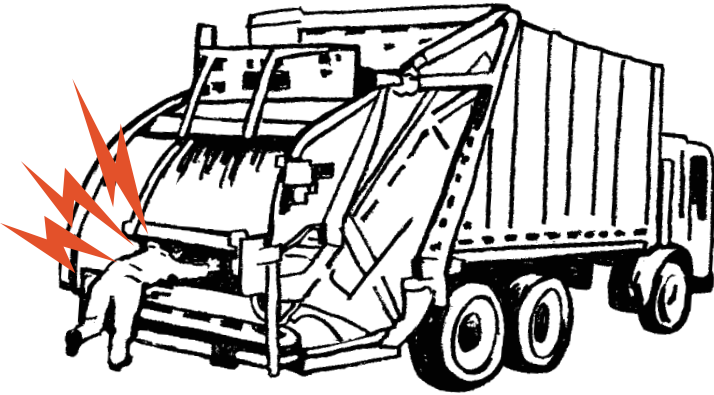




TRASH TRUCK WORKERS CRUSHED!



In recent incidents, two laborers, Marcos B.* and Pete S.*, died while collecting trash. Both were crushed by hydraulic equipment on trash trucks. In both cases, co-workers started the equipment before checking to see if anyone could be struck by the moving equipment. Marcos was crushed by hydraulic arms when they were lowered to the front of a truck to pick up a container. Pete was crushed by the compactor panel of a truck when it started to compact some trash.

WHAT WENT WRONG?

Marcos and Pete's co-workers did not check to see if anyone could be struck by the moving equipment.

Marcos and Pete were in the way of moving equipment on the trucks.

WHAT SHOULD BE DONE?

Make sure that no one is in the way of powered equipment before it is used.

Make sure to stand out of the way of powered equipment on trash trucks.

The California Fatality Assessment and Control Evaluation (FACE) program has been investigating work-related deaths since 1992. The goal of the FACE program is to prevent these deaths by informing workers and managers of worksite hazards and how to avoid them.

For complete fatality reports of these (03CA002 & 04CA005), or other cases, and additional information on the California FACE program, contact:

California Department of Public Health
Occupational Health Branch (OHB), FACE Program
850 Marina Bay Parkway, Building P, 3rd Floor, Richmond, CA 94804
(510) 620-5757

[California FACE Program's website \(www.cdph.ca.gov/face\)](http://www.cdph.ca.gov/face)

CA Relay Service: 711 or (800) 735-2929 (hearing/speech impaired)

To obtain a copy of this document in an alternate format, please contact OHB at (510) 620-5757. Please allow at least 10 working days to coordinate alternate format services.

* Not the victim's real name

PLEASE POST

California Department of Public Health
Occupational Health Branch, FACE Program
850 Marina Bay Parkway, Building P, 3rd Floor
Richmond, CA 94804

FACE stands for "Fatality Assessment and Control Evaluation." The purpose of the **FACE** program is to identify hazards that may cause work-related deaths so that employers and employees can help prevent them.

FACE is a program run by the Occupational Health Branch within the California Department of Public Health, and funded by the National Institute for Occupational Safety and Health.

Arnold Schwarzenegger, Governor
State of California
Kimberly Belshe, Secretary
Health and Human Services Agency
Mark B. Horton, Director
Department of Public Health
APRIL 2006

