



Pertussis Snapshot

Reported as of August 31, 2022

Figure 1. Year to date* pertussis case counts by week of onset -- California, 2017-2022

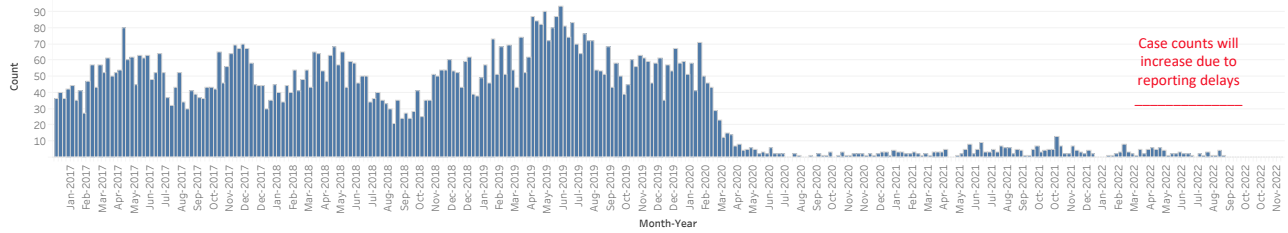


Table 1. Cumulative and year to date* pertussis case counts by health jurisdiction and year of onset -- 2017-2022

Jurisdiction†	2017		2018		2019		2020		2021		2022	
	Total*	YTD Cases	Total*	YTD Cases	Total*	YTD Cases	Total*	YTD Cases	Total*	YTD Cases	Total*	YTD Cases
CALIFORNIA	2,591	1,673	2,326	1,591	3,230	2,299	702	676	193	116	83	83
ALAMEDA	79	45	187	163	90	66	25	24	4	3	0	0
BERKELEY	8	4	8	7	4	2	2	2	0	0	0	0
BUTTE	4	0	6	6	5	5	4	4	0	0	0	0
CALAVERAS	0	0	0	0	0	0	1	1	0	0	0	0
CONTRA COSTA	43	19	58	52	56	39	17	17	7	4	2	2
DEL NORTE	0	0	0	0	0	0	7	7	0	0	0	0
EL DORADO	5	4	0	0	1	1	6	6	0	0	0	0
FRESNO	36	19	65	43	64	50	9	9	1	1	0	0
HUMBOLDT	0	0	0	0	5	3	2	2	0	0	0	0
IMPERIAL	0	0	4	1	15	15	4	4	0	0	0	0
INYO	4	0	0	0	0	0	1	0	0	0	1	1
KERN	16	9	32	25	55	28	22	22	1	0	1	1
KINGS	0	0	2	2	6	4	3	3	1	1	0	0
LAKE	8	7	0	0	0	0	0	0	1	1	0	0
LOS ANGELES‡	476	338	416	255	1,008	760	86	83	44	28	0	0
LONG BEACH	19	5	21	13	55	46	9	9	0	0	2	2
PASADENA	4	4	3	0	12	11	2	2	1	0	2	2
MADERA	7	4	24	10	29	28	4	3	0	0	7	7
MARIN	28	26	90	71	27	23	5	5	0	0	0	0
MARIPOSA	0	0	3	0	1	1	0	0	0	0	0	0
MENDOCINO	2	1	0	0	3	3	1	1	0	0	1	1
MERCED	1	0	9	5	8	7	0	0	0	0	0	0
MODOC	0	0	0	0	0	0	1	1	0	0	0	0
MONO	0	0	0	0	0	0	0	0	1	0	0	0
MONTEREY	24	17	28	23	55	39	18	18	2	2	6	6
NAPA	11	7	14	4	14	10	9	9	0	0	2	2
NEVADA	2	1	12	3	6	2	3	3	0	0	0	0
ORANGE	187	109	144	115	151	81	40	39	9	4	1	1
PLACER	77	32	19	17	29	13	8	8	1	1	0	0
PLUMAS	0	0	0	0	1	0	0	0	0	0	0	0
RIVERSIDE	125	94	53	38	76	57	22	22	17	12	5	5
SACRAMENTO	51	29	84	73	98	68	43	42	9	6	4	4
SAN BENITO	1	1	0	0	4	3	1	1	0	0	0	0
SAN BERNARDINO	35	23	18	12	41	26	10	9	0	0	2	2
SAN DIEGO	911	586	434	315	630	364	219	211	70	39	39	39
SAN FRANCISCO	30	19	29	20	29	22	6	5	1	1	0	0
SAN JOAQUIN	5	0	22	15	17	12	2	2	1	1	0	0
SAN LUIS OBISPO	14	10	13	4	18	14	5	5	4	2	1	1
SAN MATEO	45	32	58	45	48	38	13	13	2	1	0	0
SANTA BARBARA	8	3	17	8	17	10	10	10	2	2	0	0
SANTA CLARA	153	125	149	113	172	152	18	17	4	2	0	0
SANTA CRUZ	39	20	149	25	211	172	20	20	2	1	0	0
SHASTA	1	1	0	0	6	5	0	0	2	0	1	1
SISKIYOU	3	2	0	0	0	0	2	2	0	0	0	0
SOLANO	14	8	4	2	2	2	3	3	0	0	1	1
SONOMA	13	7	70	45	21	19	5	5	0	0	0	0
STANISLAUS	5	5	10	2	22	17	2	2	0	0	0	0
SUTTER	2	1	0	0	1	1	1	0	0	0	1	1
TEHAMA	1	0	0	0	0	0	0	0	0	0	0	0
TRINITY	0	0	0	0	1	0	0	0	0	0	0	0
TULARE	11	8	7	4	28	19	6	3	4	3	1	1
TUOLUMNE	5	5	1	1	1	0	0	0	0	0	0	0
VENTURA	56	27	50	41	72	50	18	17	2	1	2	2
YOLO	4	3	10	10	14	10	3	3	0	0	1	1
YUBA	18	13	3	3	1	1	4	2	0	0	0	0

Table 2. Cumulative and year to date* pertussis case counts and deaths among infants <4 months of age by year of onset -- California, 2017-2022

	2017		2018		2019		2020		2021		2022	
	Total*	Deaths*	Total*	Deaths*	Total*	Deaths*	Total*	Deaths*	Total*	Deaths*	Total*	Deaths*
CALIFORNIA	112	0	119	1	180	1	45	0	11	0	6	0

* Total counts include cases for the entire year; year to date (YTD) counts include cases reported with an onset date between January 1 and August 31. Total and YTD counts for the current year will be the same.

† Counties with no cases reported between 2017-2022 are excluded from the table above. City health jurisdictions (Berkeley, Pasadena, and Long Beach) are excluded from county total.

‡ Due to delays in reporting, CDPH will include preliminary Los Angeles County cases in order to effectively track the epidemiology of pertussis in the state effective August 19, 2019.

Notes:

- This report should be viewed as a preliminary "snapshot" of pertussis activity. Because data are preliminary, the information may be updated in later reports as additional case reports are received.

- Reports include probable and confirmed cases based on the Council of State and Territorial Epidemiologists (CSTE) case definition current at the year of report. Case counts reflect a case definition change in 2020.