



Pertussis Snapshot

Reported as of July 31, 2022

Figure 1. Year to date* pertussis case counts by week of onset -- California, 2017-2022

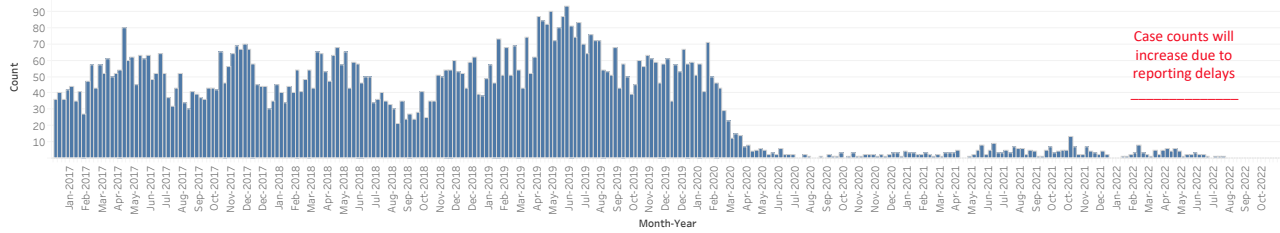


Table 1. Cumulative and year to date* pertussis case counts by health jurisdiction and year of onset -- 2017-2022

Jurisdiction†	2017		2018		2019		2020		2021		2022	
	Total*	YTD Cases	Total*	YTD Cases	Total*	YTD Cases	Total*	YTD Cases	Total*	YTD Cases	Total*	YTD Cases
CALIFORNIA	2,591	1,500	2,326	1,457	3,230	2,033	702	673	193	96	72	72
ALAMEDA	79	39	187	157	90	54	25	24	4	2	0	0
BERKELEY	8	4	8	7	4	2	2	2	0	0	0	0
BUTTE	4	0	6	6	5	4	4	4	0	0	0	0
CALAVERAS	0	0	0	0	0	0	1	1	0	0	0	0
CONTRA COSTA	43	13	58	51	56	35	17	17	7	4	2	2
DEL NORTE	0	0	0	0	0	0	7	7	0	0	0	0
EL DORADO	5	3	0	0	1	1	6	6	0	0	0	0
FRESNO	36	16	65	35	64	43	9	9	1	0	0	0
HUMBOLDT	0	0	0	0	5	3	2	2	0	0	0	0
IMPERIAL	0	0	4	0	15	13	4	4	0	0	0	0
INYO	4	0	0	0	0	0	1	0	0	0	1	1
KERN	16	9	32	21	55	20	22	22	1	0	1	1
KINGS	0	0	2	1	6	4	3	3	1	1	0	0
LAKE	8	4	0	0	0	0	0	0	1	1	0	0
LOS ANGELES‡	476	305	416	227	1,008	688	86	83	44	19	0	0
LONG BEACH	19	4	21	13	55	45	9	9	0	0	2	2
PASADENA	4	3	3	0	12	10	2	2	1	0	2	2
MADERA	7	4	24	9	29	25	4	3	0	0	7	7
MARIN	28	23	90	70	27	20	5	5	0	0	0	0
MARIPOSA	0	0	3	0	1	1	0	0	0	0	0	0
MENDOCINO	2	1	0	0	3	3	1	1	0	0	1	1
MERCED	1	0	9	5	8	6	0	0	0	0	0	0
MODOC	0	0	0	0	0	0	1	0	0	0	0	0
MONO	0	0	0	0	0	0	0	0	1	0	0	0
MONTEREY	24	16	28	19	55	35	18	18	2	2	1	1
NAPA	11	5	14	4	14	10	9	9	0	0	2	2
NEVADA	2	1	12	2	6	1	3	3	0	0	0	0
ORANGE	187	94	144	98	151	63	40	39	9	4	1	1
PLACER	77	31	19	17	29	11	8	8	1	1	0	0
PLUMAS	0	0	0	0	1	0	0	0	0	0	0	0
RIVERSIDE	125	83	53	33	76	47	22	22	17	12	5	5
SACRAMENTO	51	25	84	71	98	62	43	42	9	6	4	4
SAN BENITO	1	1	0	0	4	3	1	1	0	0	0	0
SAN BERNARDINO	35	17	18	11	41	18	10	9	0	0	2	2
SAN DIEGO	911	544	434	287	630	307	219	209	70	32	35	35
SAN FRANCISCO	30	16	29	16	29	20	6	5	1	1	0	0
SAN JOAQUIN	5	0	22	14	17	11	2	2	1	1	0	0
SAN LUIS OBISPO	14	9	13	3	18	13	5	5	4	1	1	1
SAN MATEO	45	30	58	44	48	33	13	13	2	1	0	0
SANTA BARBARA	8	3	17	7	17	9	10	10	2	2	0	0
SANTA CLARA	153	113	149	106	172	141	18	17	4	2	0	0
SANTA CRUZ	39	15	149	24	211	155	20	20	2	1	0	0
SHASTA	1	1	0	0	6	5	0	0	2	0	1	1
SISKIYOU	3	2	0	0	0	0	2	2	0	0	0	0
SOLANO	14	6	4	2	2	2	3	3	0	0	1	1
SONOMA	13	7	70	43	21	19	5	5	0	0	0	0
STANISLAUS	5	4	10	1	22	17	2	2	0	0	0	0
SUTTER	2	1	0	0	1	1	1	0	0	0	1	1
TEHAMA	1	0	0	0	0	0	0	0	0	0	0	0
TRINITY	0	0	0	0	1	0	0	0	0	0	0	0
TULARE	11	5	7	4	28	14	6	3	4	2	1	1
TUOLUMNE	5	5	1	1	1	0	0	0	0	0	0	0
VENTURA	56	22	50	36	72	49	18	17	2	1	0	0
YOLO	4	3	10	10	14	9	3	3	0	0	1	1
YUBA	18	13	3	2	1	1	4	2	0	0	0	0

Table 2. Cumulative and year to date* pertussis case counts and deaths among infants <4 months of age by year of onset -- California, 2017-2022

	2017		2018		2019		2020		2021		2022	
	Total*	Deaths*	Total*	Deaths*	Total*	Deaths*	Total*	Deaths*	Total*	Deaths*	Total*	Deaths*
CALIFORNIA	112	0	119	1	180	1	45	0	11	0	6	0

* Total counts include cases for the entire year; year to date (YTD) counts include cases reported with an onset date between January 1 and July 31. Total and YTD counts for the current year will be the same.

† Counties with no cases reported between 2017-2022 are excluded from the table above. City health jurisdictions (Berkeley, Pasadena, and Long Beach) are excluded from county total.

‡ Due to delays in reporting, CDPH will include preliminary Los Angeles County cases in order to effectively track the epidemiology of pertussis in the state effective August 19, 2019.

Notes:

- This report should be viewed as a preliminary "snapshot" of pertussis activity. Because data are preliminary, the information may be updated in later reports as additional case reports are received.

- Reports include probable and confirmed cases based on the Council of State and Territorial Epidemiologists (CSTE) case definition current at the year of report. Case counts reflect a case definition change in 2020.