

California Influenza Surveillance Project

Viral and Rickettsial Disease Laboratory

2008-2009

Influenza Update – Week 45 (November 2 – November 8, 2008)

National Influenza Activity:

- Nationwide, a low level of influenza activity was reported in the United States.
- Forty (1.7%) specimens tested by U.S. World Health Organization (WHO) and National Respiratory and Enteric Virus Surveillance System (NREVSS) collaborating laboratories, and reported to CDC/Influenza Division, were positive for influenza.
- The proportion of deaths attributed to pneumonia and influenza (P&I) was below the epidemic threshold.
- The proportion of outpatient visits for influenza-like illness (ILI) was below national and region-specific baseline levels.
- One state reported local influenza activity; 15 states and Puerto Rico reported sporadic influenza activity; 34 states and the District of Columbia reported no influenza activity.

California Influenza Activity:

- Influenza activity, including sentinel provider outpatient influenza-like illnesses and Kaiser Permanente P&I (pneumonia and influenza), remains low throughout California.
- Based on reports of infrequent positive influenza laboratory tests in both Northern and Southern California, influenza activity in California remained **sporadic** (defined by the CDC as “Isolated cases of lab confirmed influenza in the state, but ILI activity is not increased”).
- No new cases of severe pediatric influenza or pediatric influenza-associated fatalities* were reported this week.

*Age 0- 17 years; a clinical syndrome consistent with influenza or complications of influenza; confirmation by laboratory testing; and have been hospitalized in the ICU or died (with no period of complete recovery between the illness and death).

Kaiser Permanente inpatient, sentinel providers’ outpatient influenza-like illnesses, and Kaiser Permanente antiviral data:

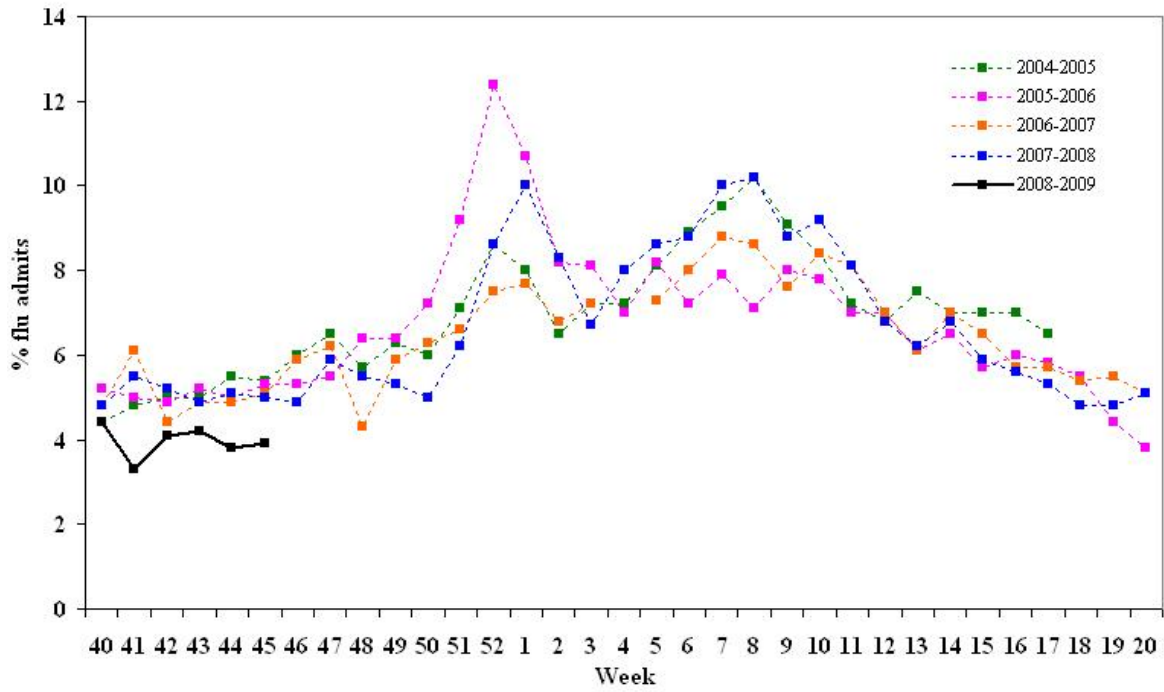
Week	Kaiser Inpatient Data % (range)*		Outpatient ILI Data %(# reported)‡	Kaiser Antiviral Data§	
	Northern CA	Southern CA		Northern CA	Southern CA
45	3.9 (0.0–7.5)	1.7 (0.0–3.4)	0.8 (77 reported)	56	82
Previous week	3.8 (0.0–11.1)	2.0 (0.7–3.4)	0.7 (97 reported)	46	70

* “Flu admissions” are present year-round. During the off-season, these consist chiefly of pneumonia, which represents approximately 3–5% of all admissions

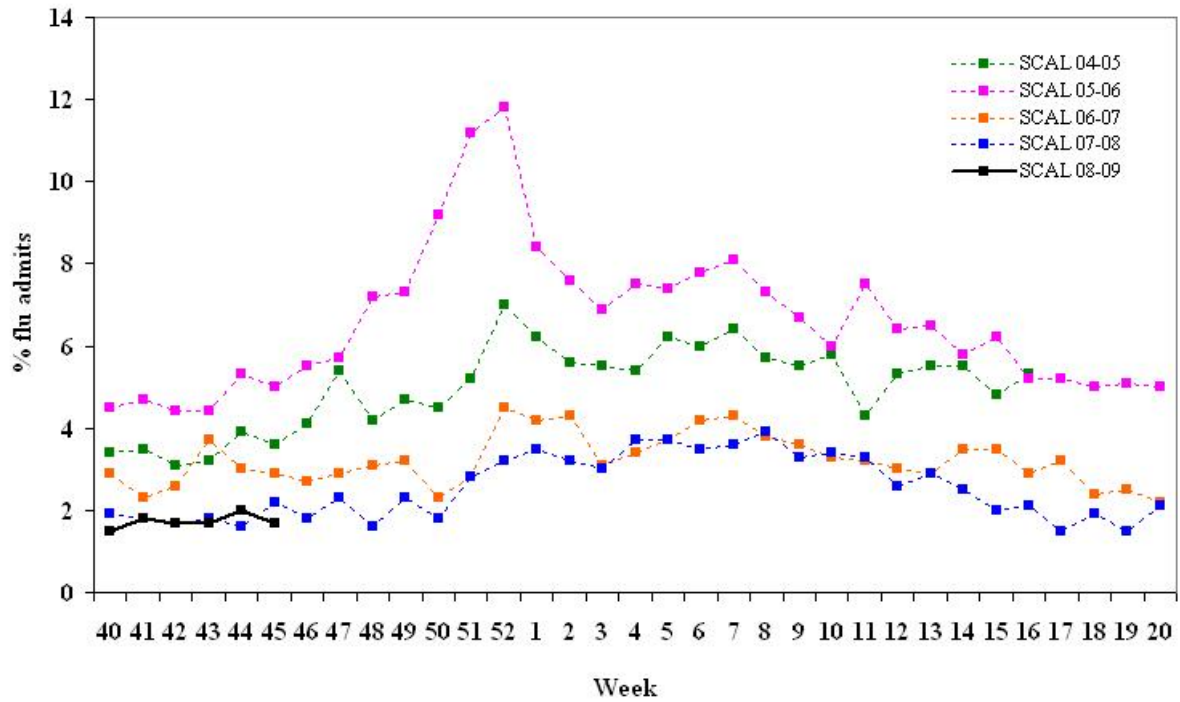
‡ The percentage of outpatient visits for influenza-like illness (ILI) is calculated by dividing the number of ILI visits by the total number of outpatient visits per week

§ The number of prescriptions filled for the antiviral drugs used for influenza (amantadine, rimantadine, zanamivir, and oseltamivir) by Kaiser outpatient pharmacies in California

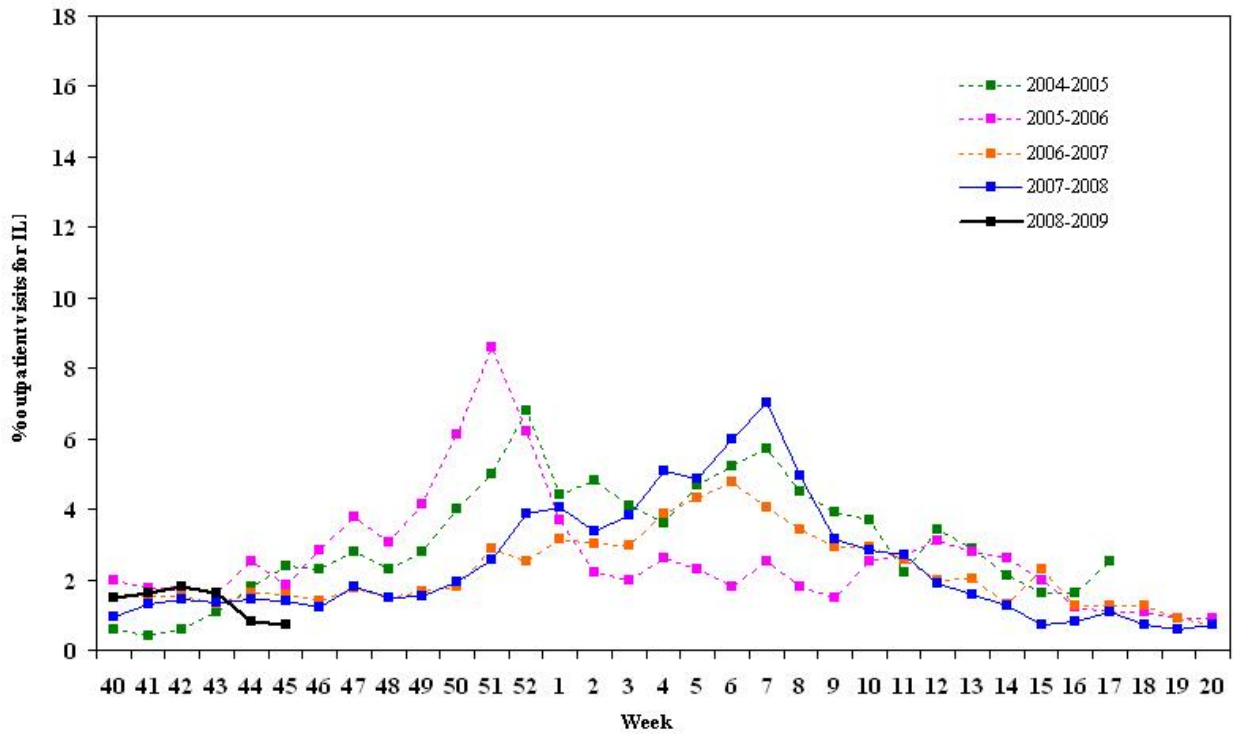
Inpatient "Flu" Admissions 2004-2009 Northern California Kaiser



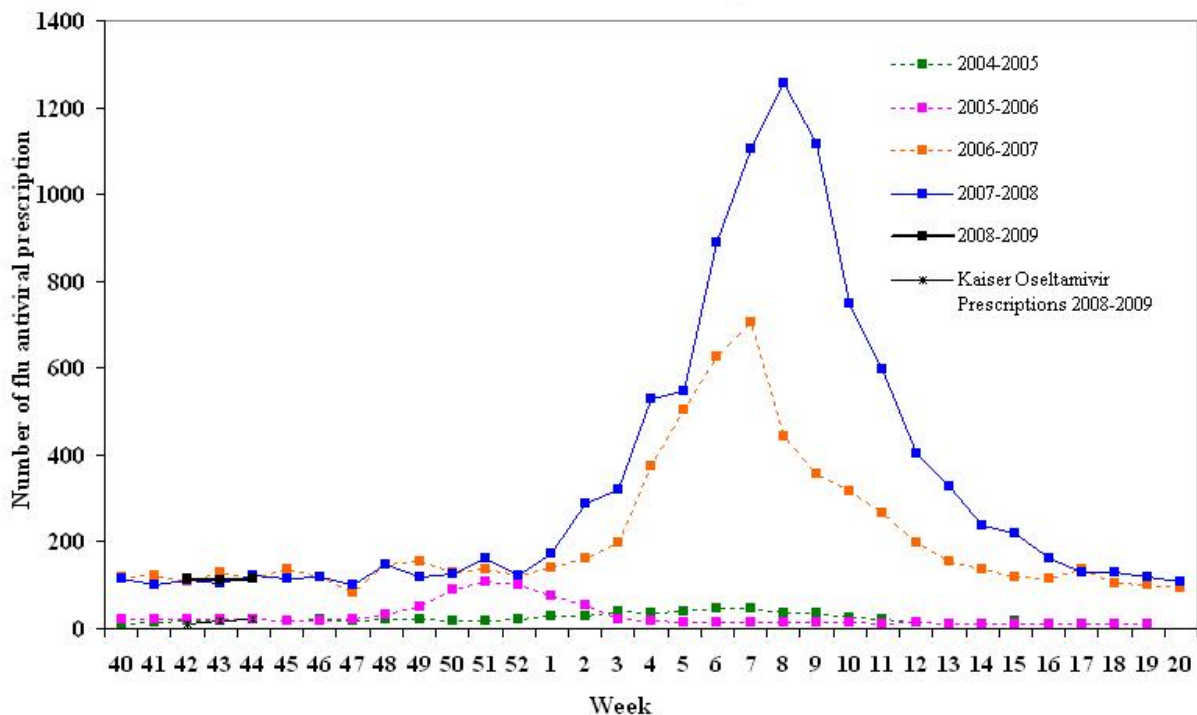
Inpatient "Flu" Admissions 2004-2009 Southern California Kaiser



California Sentinel Providers Influenza-Like Illness (ILI) Visits 2004-2009



Kaiser Pharmacy Data Influenza Antiviral Usage 2004-2009



Laboratory Data (viral isolation and detection)

		Sentinel Laboratories/Respiratory Laboratory Network [‡]	Sentinel Providers
Week 45	Number of Sites Reporting	18	16 specimens submitted through week 45 (0 positive by PCR)
	Influenza A	0 Total to date: 1	0
	Influenza B	1 ^a Total to date: 5	0
	Influenza A/B	0 Total to date: 0	0
	RSV	25 ^b Total to date: 53	0
	Other Respiratory Viruses	3 ^c Total to date: 36	0

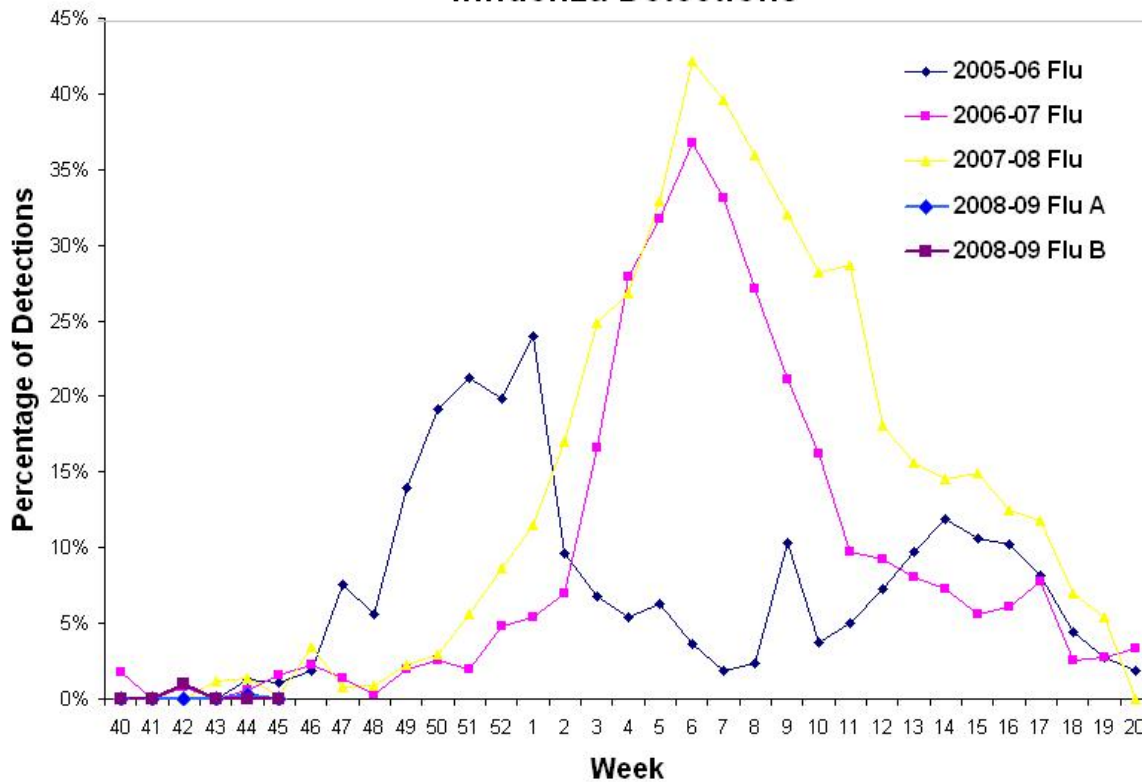
[‡]Sentinel laboratories are hospital, academic, private, and public health laboratories located throughout California that provide data on the number of laboratory-confirmed influenza and other respiratory virus detections and isolations. The Respiratory Laboratory Network (RLN) is a network of 23 local public health laboratories that offer enhanced diagnostic testing with the “R-mix” shell vial assay, which detects several respiratory pathogens, including influenza A and B viruses, respiratory syncytial virus, parainfluenza virus, and adenovirus. Some RLN labs also offer PCR testing for influenza A and B.

^aOrange (1)

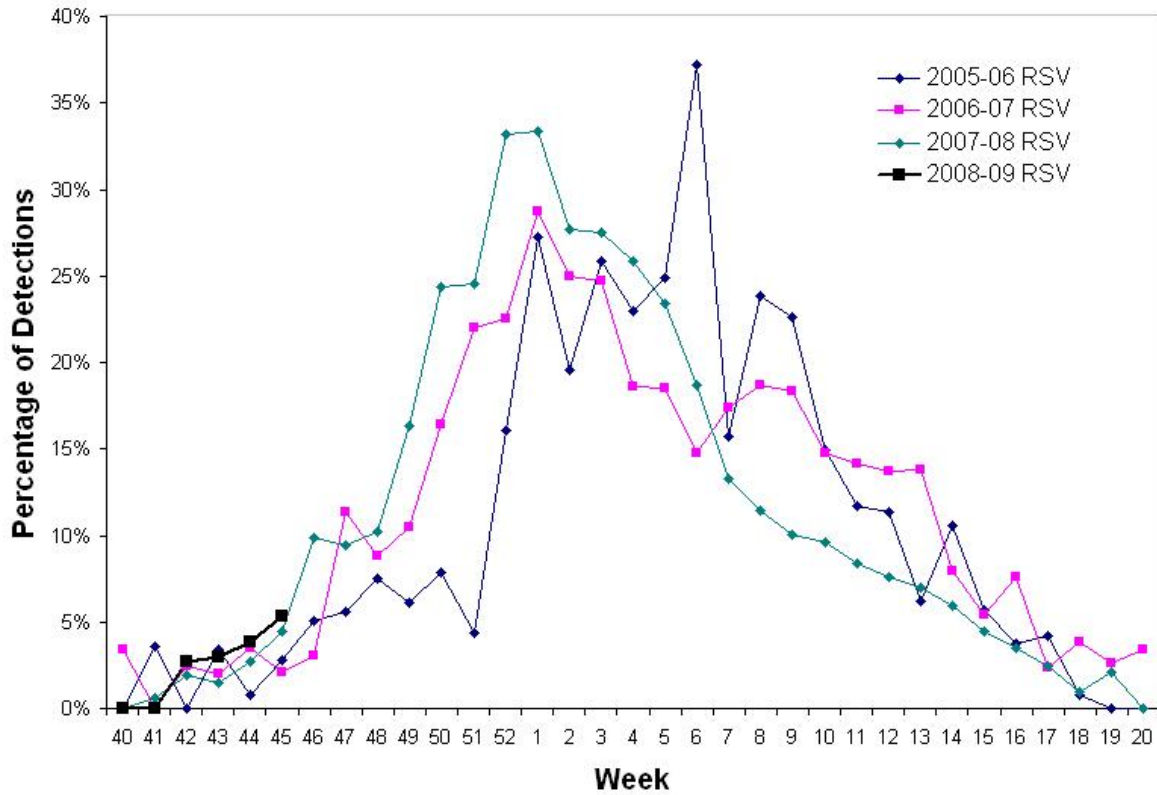
^bAlameda (2); Contra Costa (2); Long Beach (1); Los Angeles (2); Marin (1); San Diego (1); San Francisco (6); San Mateo (4); Santa Clara (5); Sonoma (1)

^cparainfluenza type 2 (2); adenovirus (1)

Sentinel Laboratories/Respiratory Laboratory Network Influenza Detections



Sentinel Laboratories/Respiratory Laboratory Network RSV Detections



Respiratory Laboratory Network:

County Name	Rmix	PCR
Alameda	X	X
Contra Costa		X
Fresno	X	X
Humboldt		X
Imperial	X	
Long Beach	X	
Los Angeles	X	X
Monterey		X
Orange	X	X
Placer	X	X
Sacramento	X	
San Bernardino	X	X
San Diego	X	X
San Francisco	X	
San Joaquin	X	X
Santa Clara	X	X
Shasta	X	X
Solano	X	X
Sonoma	X	
Stanislaus	X	
Tulare	X	
Ventura	X	
VRDL	X	X

Please continue to assist us in recruiting primary care providers (physicians, nurse practitioners, and physician assistants) to be sentinel physicians in your area. For more information, contact Melissa Dahlke at flu@cdph.ca.gov or 510-620-3494.

For questions about the California Influenza Surveillance Project, please contact Erica Boston (erica.boston@cdph.ca.gov) or Janice Louie (janice.louie@cdph.ca.gov).