



## California Department of Public Health Influenza Surveillance Program

### *California Influenza and Other Respiratory Disease Surveillance for Week 20 (May 17, 2015 to May 23, 2015)*

Note: This report includes data from many sources of influenza surveillance and it should be viewed as a preliminary “snapshot” of influenza activity for each surveillance week. Because data are preliminary, the information may be updated in later reports as additional data are received. These data should not be considered population-based or representative of all California public health jurisdictions.

**Overall geographic influenza activity in California was “sporadic\*” during Week 20.**

#### **Influenza Report Highlights**

- Outpatient influenza-like illness (ILI)
  - 1.4% of patient visits during Week 20 were for ILI, which is lower compared to Week 19 (2.4%); the percentage of outpatient visits for ILI does not exceed the epidemic threshold for this time of year
- Hospitalization data
  - 4.6% of Kaiser patients hospitalized during Week 20 were admitted with a pneumonia and/or influenza (P&I) diagnosis, which is similar to Week 19 (4.4%); the percentage of P&I admissions is below the epidemic threshold for this time of year
- Influenza virus detections by Respiratory Laboratory Network and Sentinel Laboratories
  - 30 (5.6%) of 540 specimens tested positive for influenza during Week 20, which is similar to Week 19 (5.9%)
  - Influenza B viruses continue to circulate at low levels
  - Nationally, 19.2% of influenza A (H3) viruses characterized match the 2014–2015 influenza vaccine component as of Week 19
- Influenza-associated deaths among patients 0–64 years of age
  - 4 laboratory-confirmed influenza deaths were reported during Week 20
- Influenza-associated outbreaks
  - 6 laboratory-confirmed influenza outbreaks were reported during Week 20
- For the [Centers for Disease Control and Prevention \(CDC\)](http://www.cdc.gov/flu/weekly/overview.htm) definitions of influenza geographic distribution, please go to <http://www.cdc.gov/flu/weekly/overview.htm>.

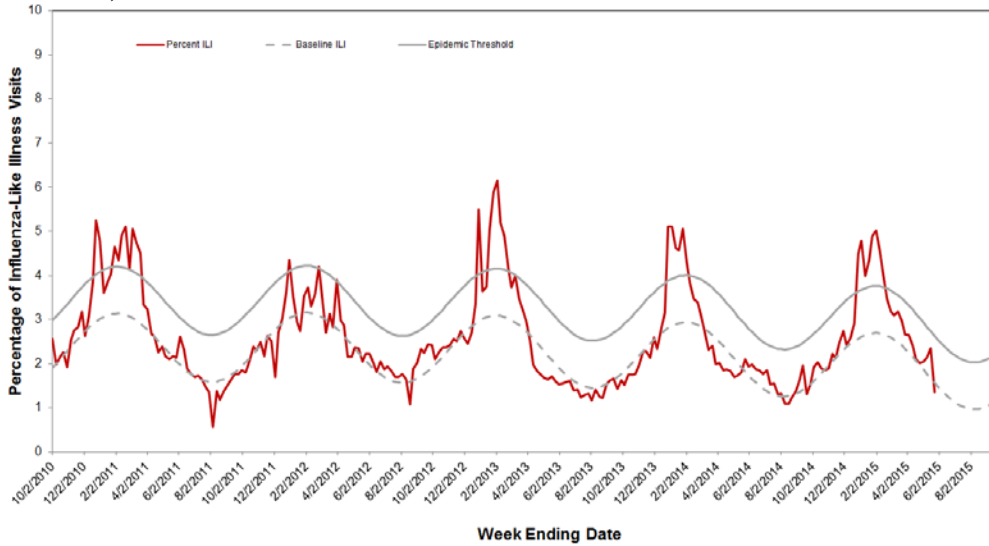
#### **A. Outpatient and Inpatient Data**

##### 1. Influenza Sentinel Providers

Sentinel providers (physicians, nurse practitioners, and physician assistants) situated throughout California report on a weekly basis the number of patients seen with influenza-like illness (ILI) and the total number of patients seen for any reason. ILI is defined as any illness with fever ( $\geq 100^{\circ}\text{F}$  or  $37.8^{\circ}\text{C}$ ) AND cough and/or sore throat (in the absence of a known cause other than influenza).

A total of 71 enrolled sentinel providers have reported data for Week 20. Based on available data, the percentage of visits for ILI in Week 20 (1.4%) does not exceed the epidemic threshold for this time of year (Figure 1).

**Figure 1. Percentage of Influenza-like Illness Visits Among Patients Seen by California Sentinel Providers, 2010–2015**



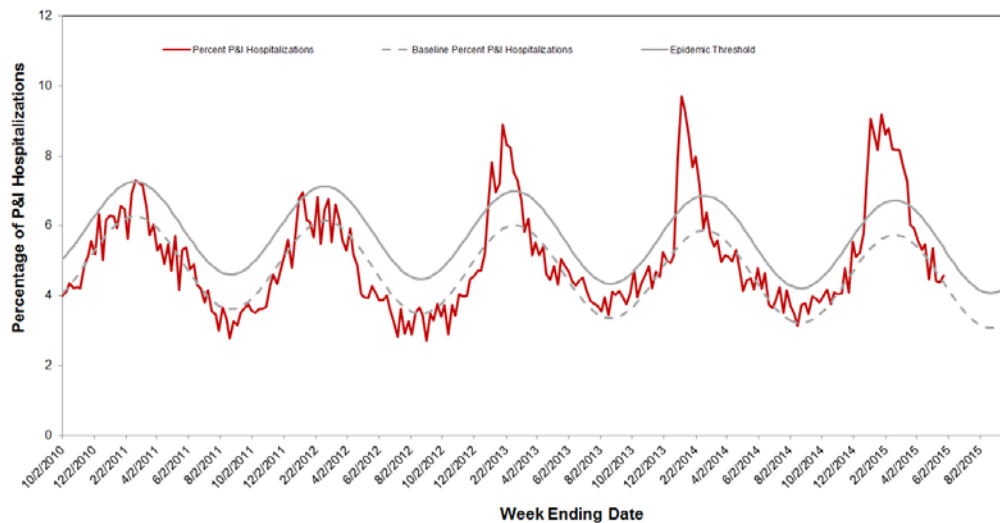
The seasonal baseline was calculated using a regression model applied to data from the previous eight years. The epidemic threshold is two standard deviations above the seasonal baseline and is the point at which the observed percentage of ILI is significantly higher than would be expected at that time of the year.

**2. Kaiser Permanente Hospitalization Data**

Inpatients at Kaiser Permanente facilities with an admission diagnosis including the keywords “flu,” “influenza,” “pneumonia,” or variants of the keywords are defined as pneumonia and influenza (P&I)-related admissions. The number of P&I admissions is divided by the total number of hospital admissions occurring in the same time period to estimate the percentage of P&I admissions. Admissions for pregnancy, labor and delivery, birth, and outpatient procedures are excluded from the denominator.

The percentage of hospitalizations for pneumonia and influenza (P&I) at Kaiser Permanente facilities in northern and southern California during Week 20 was 4.6% and does not exceed the epidemic threshold (5.4%) for this time of the year (Figure 2).

**Figure 2. Percentage of P&I Hospitalizations in Kaiser Permanente Northern and Southern California Hospitals, 2010–2015**



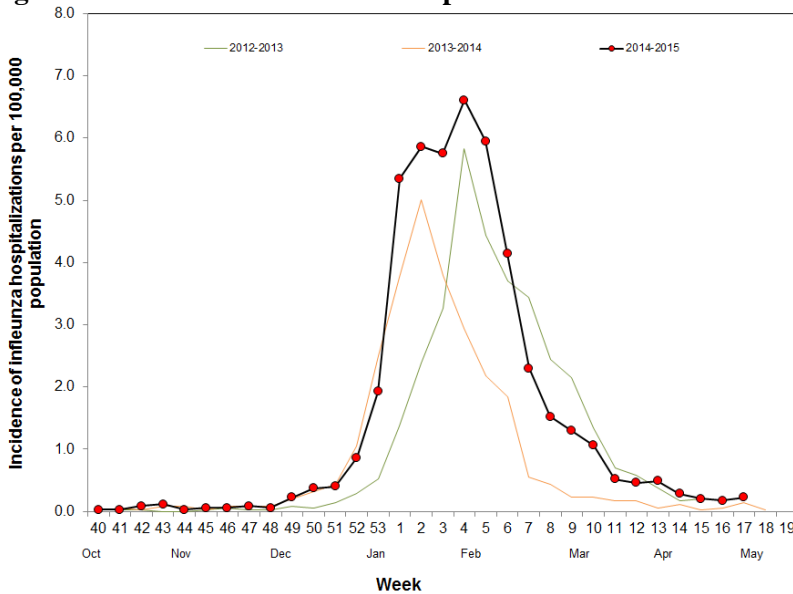
The seasonal baseline was calculated using a regression model applied to data from the previous six years. The epidemic threshold is two standard deviations above the seasonal baseline and is the point at which the observed percentage of pneumonia and influenza hospitalizations in Kaiser Permanente hospitals in northern California is significantly higher than would be expected at that time of the year.

### 3. Influenza-Associated Hospitalizations, California Emerging Infections Program

The California Emerging Infections Program (CEIP), Influenza Surveillance Network (FluSurv-NET) conducts population-based surveillance for laboratory-confirmed influenza-associated hospitalizations among patients of all ages in Alameda, Contra Costa, and San Francisco counties.

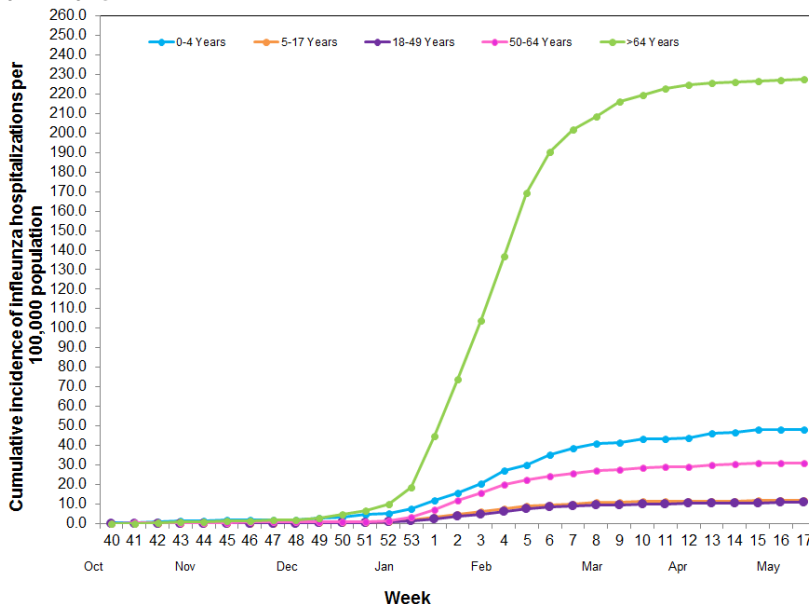
CEIP concluded surveillance for the 2014-2015 influenza season on April 30, 2015 (Week 17); therefore no data is presented after that date. To date this season, the highest rate of hospitalization is among older adults age >64, followed by children age 0-4 years (Figure 4). Adults age >64 have accounted for more than 65% of reported hospitalized cases.

**Figure 3. Incidence of Influenza Hospitalizations in CEIP Counties, 2012–2015**



Note: The 2014-15 season contains a week 53. Prior years' data have been shifted so that week 1 aligns across years.

**Figure 4. Cumulative Incidence of Influenza Hospitalizations in CEIP Counties by Age Group, 2014-2015**



Note: The 2014-15 season contains a week 53. Prior years' data have been shifted so that week 1 aligns across years.

## B. Laboratory Update – Influenza

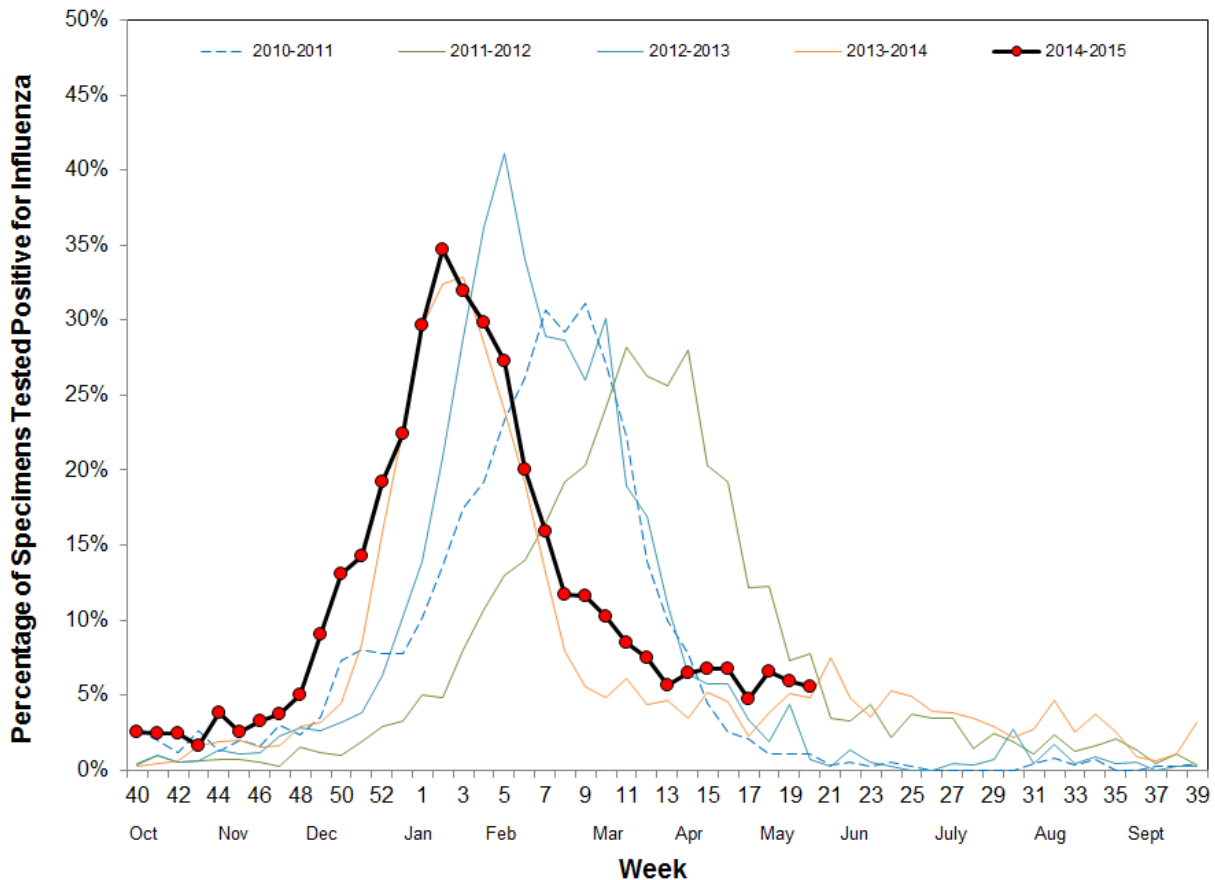
### 1. Respiratory Laboratory Network (RLN) and Sentinel Laboratory Surveillance Results

Laboratory surveillance for influenza and other respiratory viruses involves the use of data from hospital, academic, private and public health laboratories located throughout California. These laboratories report the number of laboratory-confirmed influenza and other respiratory virus detections and isolations on a weekly basis.

The percentage of influenza detections in the RLN and sentinel laboratories in Week 20 was 5.6%, which is comparable to Week 19 (5.9%) (Figure 5). Additional details can be found in Figure 6 and Table 1 below.

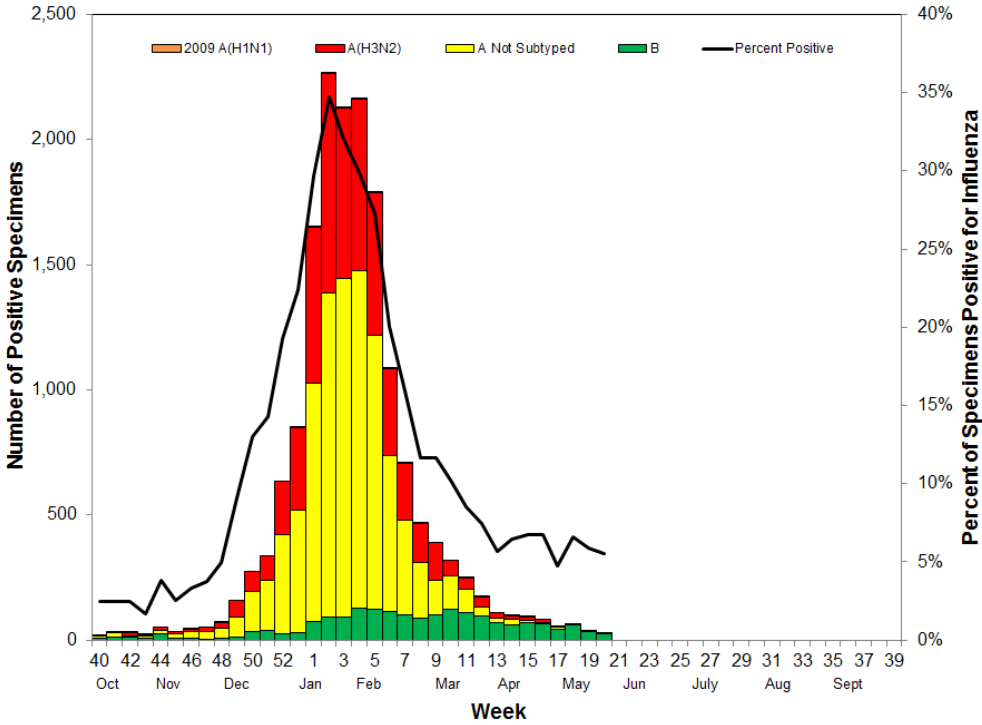
Neither the RLN nor CDPH-VRDL have identified any influenza viruses by polymerase chain reaction (PCR) typing or subtyping that are suggestive of a novel influenza virus.

**Figure 5. Percentage of Influenza Detections in Respiratory Laboratory Network and Sentinel Laboratories, 2010–2015**



Note: The 2014–15 season contains a week 53. Prior years' data have been shifted so that week 1 aligns across years.

**Figure 6. Number of Influenza Detections by Type and Subtype Detected in Respiratory Laboratory Network and Sentinel Laboratories, 2014–2015**



**Table 1. Respiratory Specimens Testing Positive for Influenza by Influenza Type and Subtype — Respiratory Laboratory Network and Sentinel Laboratories, Current Week and Season to Date**

	Week 20		Season to Date	
	Number	Percent	Number	Percent
<b>Number of Specimens Tested</b>	540		92,328	
<b>Number of Specimens Positive for Influenza</b>	30	5.6*	16,562	17.9*
<b>Influenza Type/Subtype of Positive Specimens</b>				
A	6	20.0 <sup>†</sup>	14,651	88.5 <sup>†</sup>
2009 A (H1)	0	0.0 <sup>‡</sup>	27	0.2 <sup>‡</sup>
A (H3)	4	66.7 <sup>‡</sup>	5,419	37.0 <sup>‡</sup>
A, not subtyped	2	33.3 <sup>‡</sup>	9,205	62.8 <sup>‡</sup>
B	24	80.0 <sup>†</sup>	1,911	11.5 <sup>†</sup>

\* Percent of total specimens tested for influenza

<sup>†</sup> Percent of specimens positive for influenza

<sup>‡</sup> Percent of influenza A positives

## 2. Antiviral Resistance Testing

Of the influenza specimens tested by the CDPH-VRDL to date this season, no specimens have been found to be resistant to Oseltamivir (Table 2).

**Table 2. Number of specimens tested for antiviral resistance, 2014–2015**

	<b>Neuraminidase Inhibitors Resistance</b>
<b>Influenza A (H3)</b>	0/118
<b>Influenza 2009A (H1)</b>	0/6
<b>Influenza B</b>	0/70

### 3. Influenza Virus Strain Characterization

To date in California, not all influenza A (H3) antigenically characterized viruses have matched the influenza A (H3) component included in the trivalent and quadrivalent influenza vaccines (Table 3). The drifted influenza A (H3) virus, A/Switzerland/9715293/2013-Like (H3N2), is circulating in California.

**Table 3. Influenza virus antigenic characterization data — California and the United States, 2014–2015**

<b>Influenza Subtype/Lineage</b>	<b>Vaccine Strain</b>	<b>Match Vaccine Strain</b>	
		<b>California</b>	<b>United States</b>
<b>Influenza A (H1)</b>	A/California/7/2009-like (H1N1)	4/4	50/50
<b>Influenza A (H3)</b>	A/Texas/50/2012-like (H3N2)	7/23	244/1267
<b>Influenza B Victoria*</b>	B/Brisbane/60/2008-like	26/26	185/190
<b>Influenza B Yamagata†</b>	B/Massachusetts/02/2012-like	35/35	432/443

\* The influenza B Victoria lineage virus is included in only the 2014–2015 quadrivalent influenza vaccine

† The influenza B Yamagata lineage virus is included in both the 2014–2015 trivalent and quadrivalent influenza vaccines

### **C. Laboratory-Confirmed Severe Influenza Case Reports**

Currently, as mandated under Section 2500 of the California Code of Regulations, deaths among patients aged 0–64 years with laboratory-confirmed influenza are reportable to CDPH.

In Week 20, four laboratory-confirmed influenza deaths were reported to CDPH. The deaths occurred in the lower and upper Southern California regions. To date, 66 laboratory-confirmed influenza deaths have been reported for the 2014–2015 influenza season. Of the fatal cases to date this season, 7 (11%) occurred among children less than 18 years of age, 25 (38%) occurred among adults 18-49 years of age, and 34 (52%) occurred among adults 50-64 years of age.

### **D. Influenza-Associated Outbreaks**

CDPH received reports of 6 laboratory-confirmed influenza outbreaks during Week 20. To date for the 2014-2015 season, there have been 266 laboratory-confirmed influenza outbreaks reported to CDPH. Additional details can be found in Table 4.

**Table 4. Characteristics of Influenza-Associated Outbreaks**

Influenza Type/Subtype	Week 20 (n=6)		Season to Date (n=266)	
	Number	Percent	Number	Percent
<b>A</b>	6	100.0*	227	85.3*
<b>2009 A (H1)</b>	0	0.0 <sup>†</sup>	0	0.0 <sup>†</sup>
<b>A (H3)</b>	2	33.3 <sup>†</sup>	67	29.5 <sup>†</sup>
<b>A, not subtyped</b>	4	66.7 <sup>†</sup>	160	70.5 <sup>†</sup>
<b>B</b>	0	0.0*	13	4.9*
<b>A and B co-infection</b>	0	0.0*	7	2.6*
<b>Type unknown</b>	0	0.0*	19	7.1*
<b>Location of Outbreak</b>				
<b>Acute care healthcare facility</b>	0	0.0	2	0.8
<b>Correctional facility</b>	0	0.0	5	1.9
<b>Military facility</b>	0	0.0	0	0.0
<b>Residential healthcare facility</b>	3	50.0	160	60.2
<b>Independent living facility</b>	2	33.3	77	28.9
<b>School</b>	1	16.7	20	7.5
<b>Other congregate setting</b>	0	0.0	2	0.8

\* Percent of specimens positive for influenza

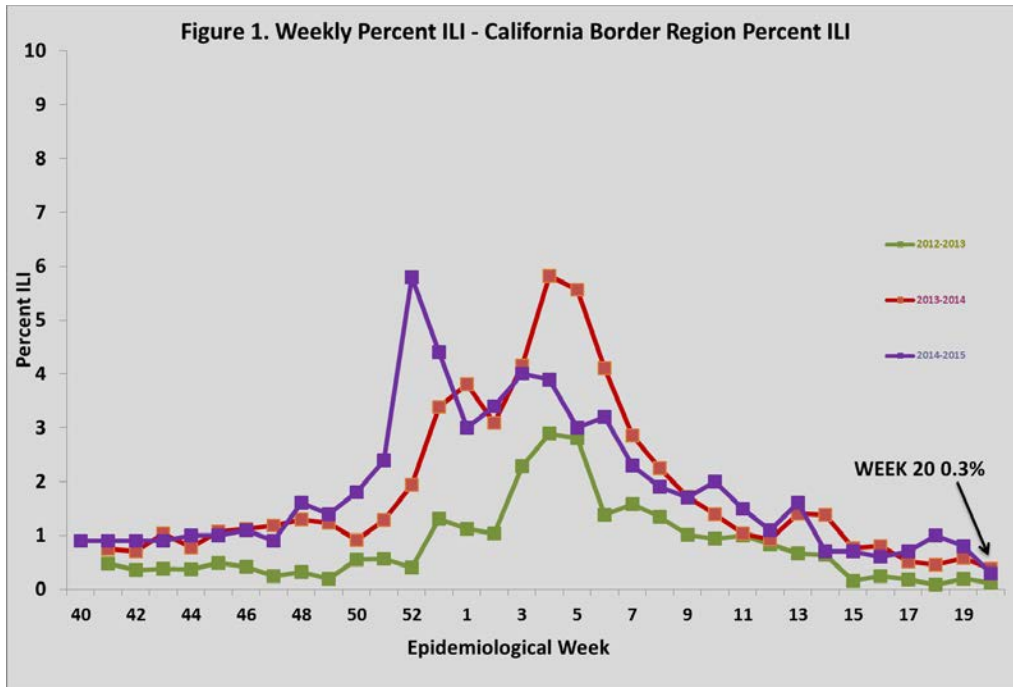
<sup>†</sup> Percent of influenza A positives

## **E. California Border Region Influenza Surveillance Network Data**

The border influenza surveillance network is comprised of outpatient provider sentinel sites whose geographical coverage extends approximately 100 kilometers (60 miles) north of the California-Baja California border and includes Imperial and San Diego Counties, as well as some parts of Riverside County.

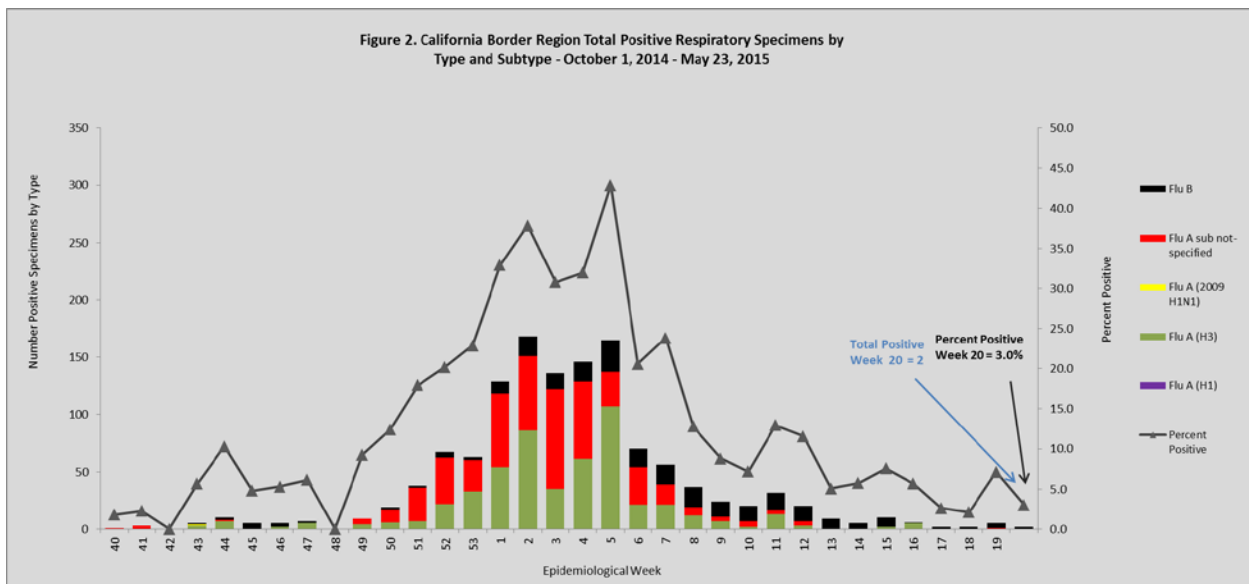
### **1. Syndromic Surveillance Update**

A total of 7 border region sentinel providers reported data during Week 20 and Week 19 of 2015. The total number of patients screened by all sentinel sites for ILI during Week 20 was 2,298. Outpatient ILI activity decreased by 0.5% from Week 19 (0.8% ILI) to Week 20 (0.3% ILI). ILI activity for the California border region during Week 20 was higher when compared to activity for the same week during the 2012–2013 influenza season and lower when compared to activity for the same week during the 2013-2014 influenza season (Figure 1). All influenza syndromic data summarized for the border region represents a subset of CDC influenza sentinel providers in California.



## 2. Virologic Surveillance Update

Cumulatively this season, a total of 6,681 respiratory specimens have been tested from border region clinics; of these, 1,276 (19.1%) tested positive for influenza. Of the 1,276 specimens that have tested positive, 1,025 (80.3%) were influenza A and 251 (19.7%) were influenza B. Of the 1,025 specimens that tested positive for influenza A, 518 (50.5%) were A (H3), 1 (0.1%) was 2009 A (H1), and 506 (49.4%) had no further subtyping performed. For Week 20, a total of 66 respiratory specimens were submitted for testing; of these 2 (3.0%) were positive for influenza. The two positive specimens were positive for influenza B. Laboratory data summarized in Figure 2 includes data from influenza sentinel sites as well as laboratory data from other border region laboratories.

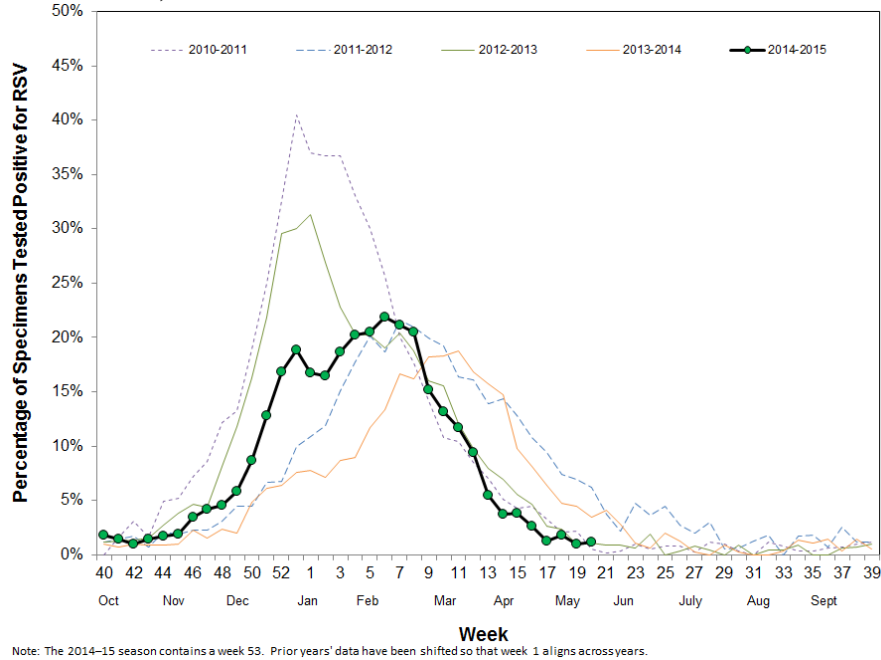




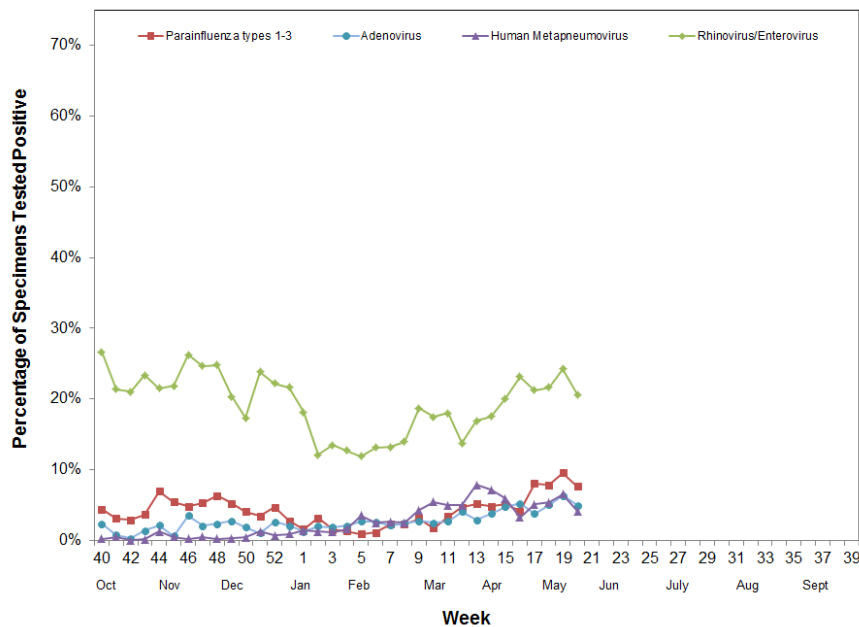
## F. Laboratory Update – Other Respiratory Viruses

During Week 20, there were 426 specimens tested for RSV and 5 (1.2%) were positive, which is similar compared to Week 19 (1.0%) (Figure 7). Information on other respiratory viruses can be found in Figure 8.

**Figure 7. Percentage of RSV Detections in Respiratory Laboratory Network and Sentinel Laboratories, 2010–2015**



**Figure 8. Percentage of Other Respiratory Pathogen Detections in Respiratory Laboratory Network and Sentinel Laboratories, 2014–2015**



---

For questions regarding influenza surveillance and reporting in California, please email [InfluenzaSurveillance@cdph.ca.gov](mailto:InfluenzaSurveillance@cdph.ca.gov). This account is monitored daily by several epidemiologists.

For more information regarding the different influenza surveillance data sources, please visit the [CDPH Influenza Surveillance Program](#)

To obtain additional information regarding influenza, please visit the [CDPH influenza website](#).

Download a copy of the [case report form](#) for reporting any laboratory-confirmed influenza case that was either admitted to the ICU or died.