



Adolescent Sexual and Reproductive Health, Mariposa County, 2014



Adolescence is the developmental period from ages 10 to 19. During adolescence and into early adulthood, the brain undergoes the last major period of growth and reorganization, resulting in an increased need for stimulation and changes in social and emotional information processing. Adolescence is a time for youth to explore their identity and values. Often this occurs in the context of peer relationships though parents and other adult figures remain influential. Although the morbidity and mortality rates increase sharply from childhood through adolescence, most youth fare well. Adolescence is a critical time for establishing patterns for a positive adulthood - including an active role in one's reproductive and sexual health.

The Local and State Populations

	Mariposa County		California		County Ranking ¹¹		Mariposa County		California		County Ranking ¹¹
	N	%	N	%			N	%	N	%	
Total Population ¹	18,091	100.0	38,548,204	100.0	53	Adolescent Population ¹	1,781	100.0	5,173,253	100.0	53
Aged 10 - 14 years	807	4.5	2,514,558	6.5	52	Hispanic	269	15.1	2,603,105	50.3	53
Aged 15 - 17 years	564	3.1	1,545,839	4.0	52	African American	11	0.6	298,301	5.8	50
Aged 18 - 19 years	410	2.3	1,112,856	2.9	52	Asian	20	1.1	565,586	10.9	47
Uninsured ²	1,809	10.2	6,267,799	16.7	53	White	1,343	75.4	1,456,012	28.1	4
Public Health Insurance ²	7,309	41.1	11,580,478	30.8	17	Male	889	49.9	2,646,572	51.2	56
Single Head-of-Household ²	986	13.5	2,470,348	19.6	45	Female	892	50.1	2,526,681	48.8	3
Total Concentrated Poverty ²	6,150	34.6	11,663,924	31.3	24	Living in Foster Care ⁴	22	0.6	62,111	0.6	28
Youth Concentrated Poverty ²	1,008	32.8	3,270,753	36.1	30	Family PACT Providers ⁵	1	--	2,297	--	56
Unemployment Rate ²	--	7.4	--	7.0	23	Youth Family PACT Clients ⁵	25	12.0	251,926	14.0	50
Rural MSSAs ³	2	100.0	227	41.9	1	High School Dropout Rate ⁶	--	3.9	--	11.5	57

Notes: ¹Adolescent Population aged 10 - 19. State of California, Department of Finance, Report P-3: State and County Population Projections by Race/Ethnicity, Detailed Age, and Gender, 2010-2060. Sacramento, California, December 2014.

²Estimated number of population with no health insurance, public health insurance; estimated number of households with male/female householder, no wife/husband present; estimated total persons and children under age 18 in concentrated poverty; unemployment rate: 2010-2014, U.S. Census Bureau, American Community Survey (5-year estimates) retrieved from <http://factfinder2.census.gov/>. ³Total rural and frontier MSSAs: Office of Statewide Health Planning & Development, Medical Study Service Areas, retrieved from: <http://www.oshpd.ca.gov/hwdd/MSSA/>. ⁴PIT (Point in Time) estimate, July 1, 2014, youth ages 0-17; University of California at Berkeley, California Child Welfare Indicators Project (CCWIP) retrieved from: http://cssr.berkeley.edu/ucb_childwelfare/PIT.aspx. ⁵Family PACT: 2013-2014, Bixby Center for Global Reproductive Health, University of California San Francisco, Family PACT Program Report. Sacramento, CA. 2014. Retrieved from: Office of Family Planning, Department of Health Care Services. ⁶High School Cohort Drop Out Rate: 2013-2014. California Department of Education, retrieved from: <http://dq.cde.ca.gov/dataquest/>.

⁷Rate per 1,000 females, 2014. Percent of repeat births is percent of births to females aged 15 - 19 with 1-6 previous live births. Birth Statistical Master File, California Department of Public Health, Center for Health Statistics and Informatics. ⁸Rate per 100,000 youth, 2014. California Department of Public Health, STD Control Branch, rates by race, age and jurisdiction, retrieved from <http://www.cdph.ca.gov/data/statistics/Pages/STDLHJData.aspx>. ⁹Rate per 100,000 youth, 2014. California Department of Justice, Office of the Attorney General, California Arrests Data File, retrieved from: <http://oag.ca.gov/crime/cjsc/stats/arrests>. ¹⁰Percent 9th graders rated with high level of caring adult in community; reported depression-related feelings in past year; with boyfriend or girlfriend who reported dating violence: 2011-2013. WestEd Health and Human Development Department for California Department of Education, retrieved from: <http://www.kidsdata.org/>. ¹¹County rankings determined by assigning rank of one to the largest value among counties and rank of 58 to smallest value.

'--' = data not available; 's' = data suppressed; * = RSE between 30% and 49%

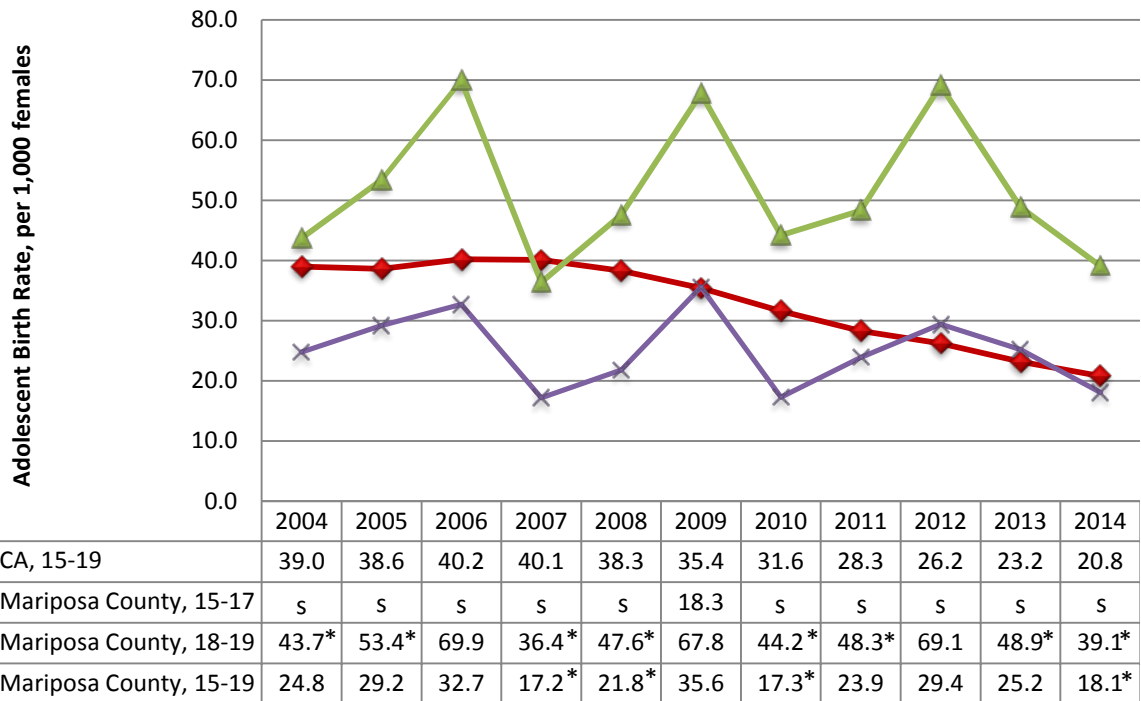
Further technical details available here: <http://www.cdph.ca.gov/data/statistics/Pages/AdolescentHealthData/CountyHealthProfiles>.



Adolescent Sexual and Reproductive Health, Mariposa County, 2014

	Geography		County Ranking ¹¹	Gender		Race and Ethnicity			
	Local	State		Female	Male	Hispanic	African American	Asian	White
Adolescent Behaviors and Outcomes									
Adolescent birth rate (aged 15-19) ^{1,7}	18.1*	20.8	36	--	--	s	0.0	0.0	21.7*
Percent of repeat adolescent births (aged 15-19) ⁷	s	16.7	--	--	--	0.0	0.0	0.0	s
Chlamydia rate (aged 15 - 19) ⁸	717.2	1,295.0	47	803.2	627.6	0.0	--	--	405.4
Gonorrhea rate (aged 15 - 19) ⁸	0.0	210.7	49	0.0	0.0	0.0	0.0	0.0	0.0
Arrest rate (aged 10 - 19) ⁹	1,572.2	2,966.3	56	896.9	2,249.7	743.5	9,090.9	--	1,787.0
Have caring adult in community ¹⁰	71.7	63.6	6	80.3	63.2	--	--	--	--
Depression-related feelings ¹⁰	26.5	30.7	37	36.7	13.7	--	--	--	--
Experienced dating violence in past year ¹⁰	3.5	5.0	38	3.4	3.8	--	--	--	--

Mariposa County Adolescent Birth Rate by Age Group, 2004 - 2014



Adolescent Births In Mariposa County

- Fewer than 10 adolescent births occurred in Mariposa County in 2014.
- Because the number of female adolescents aged 15-19 living in Mariposa County is small, trends in birth rates over time should be interpreted with caution as small changes in the number of births per year can have large effects on the birth rate.
- The adolescent birth rate has decreased 27.0% since 2004; the state decreased 46.7% over the same period.
- 100.0% of adolescent births in Mariposa County in 2014 were to women aged 18 – 19. The state average was 72.9%.
- 88.9% of adolescent births in Mariposa County were to mothers who reported a White race. The state average was 11.5%.