

HOW can you help?

Visitors and family members are key in helping residents understand the importance of personal hygiene and Enhanced Standard precautions.



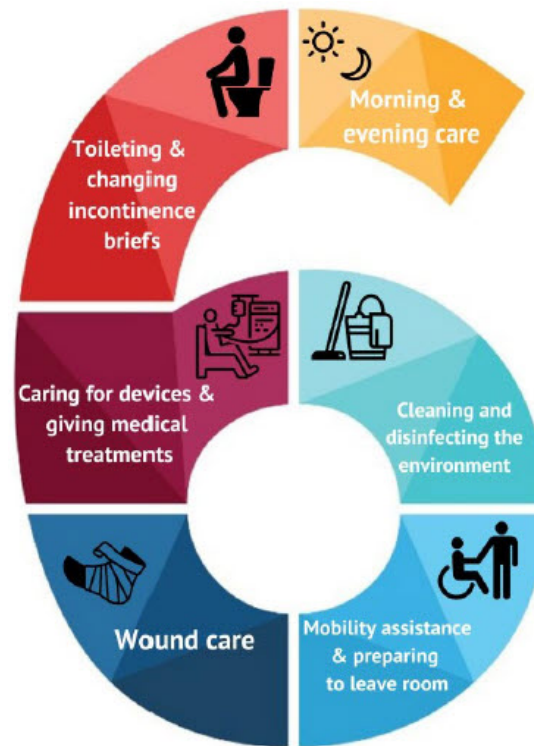
We ask visitors to:

- Perform hand hygiene frequently, and always when entering the resident's room and when leaving the room. Waterless, alcohol-based hand sanitizer is highly effective in killing germs when hands are not visibly soiled.
- Use gowns and gloves after hand hygiene when assisting staff members with providing care, or if having contact with blood, body fluids, or skin that has breakdown areas.
- Follow any other precautions listed on the door sign if a resident is on Contact or Droplet precautions.

insert facility logo here

The Six Moments for Enhanced Standard Precautions

You will see this sign on a resident door when Enhanced Standard precautions is required.



For more information visit www.cdph.ca.gov/hai

Enhanced Standard Precautions in Skilled Nursing Facilities Information for Residents and Families



Our staff want to keep all of our residents safe. **We use Enhanced Standard precautions to prevent spread of antibiotic resistant germs.** These precautions allow most residents to leave their rooms and take part in activities with others in common areas. Enhanced Standard precautions are not as restrictive as Contact precautions used in hospitals for isolating patients with resistant germs.

This brochure explains Enhanced Standard precautions and how they are used in our facility.



WHAT are Enhanced Standard precautions? This is what our staff does:

- Use hand hygiene, gloves, and gowns during care activities that require close contact

Perform hand hygiene



Wear gloves and gowns for contact with residents



- Frequent and Effective Environmental Cleaning

Clean the environment surrounding the resident, especially high-touch surfaces



WHO is managed with Enhanced Standard precautions?

Some residents have conditions (risk factors) that increase the chance that antibiotic resistant germs could be spread into the environment and to other residents. We reduce that risk by using Enhanced Standard precautions.

Enhanced Standard precautions is used if one or more of the following risk factors is present:

- Presence of indwelling devices such as tracheostomy tubes, central venous catheters, hemodialysis catheters, urinary catheters, or feeding tubes
- Unhealed wounds or pressure ulcers



WHEN do our staff use Enhanced Standard precautions?

There are six groups of high contact care activities for which Enhanced Standard precautions should be used for certain residents. These activities take place in the resident's room or bathroom.



1. **Morning & evening care**
Dressing, grooming, bathing, changing bed linens



2. **Toileting & changing incontinence briefs**



3. **Caring for devices & giving medical treatments**



4. **Wound care**



5. **Mobility assistance & preparing to leave room**



6. **Cleaning the environment**