

Introduction to NHSN for Skilled Nursing Facilities

Infection Preventionist Training for Skilled Nursing Facilities
Healthcare-Associated Infections Program
Center for Health Care Quality
California Department of Public Health



Objectives

- Describe National Healthcare Safety Network (NHSN) use in skilled nursing facilities (SNF)
- Access NHSN resources for SNF
- Review NHSN reports available for SNF

National Healthcare Safety Network

- Centers for Disease Control and Prevention (CDC) surveillance system
- Tracks HAI in hospitals, long term care facilities, and hemodialysis clinics, and ambulatory surgery centers
- Provides standardization
- Data used for HAI public reporting and pay for performance programs
- Accessed through a secure, web-based interface; open to all U.S. healthcare facilities at no charge

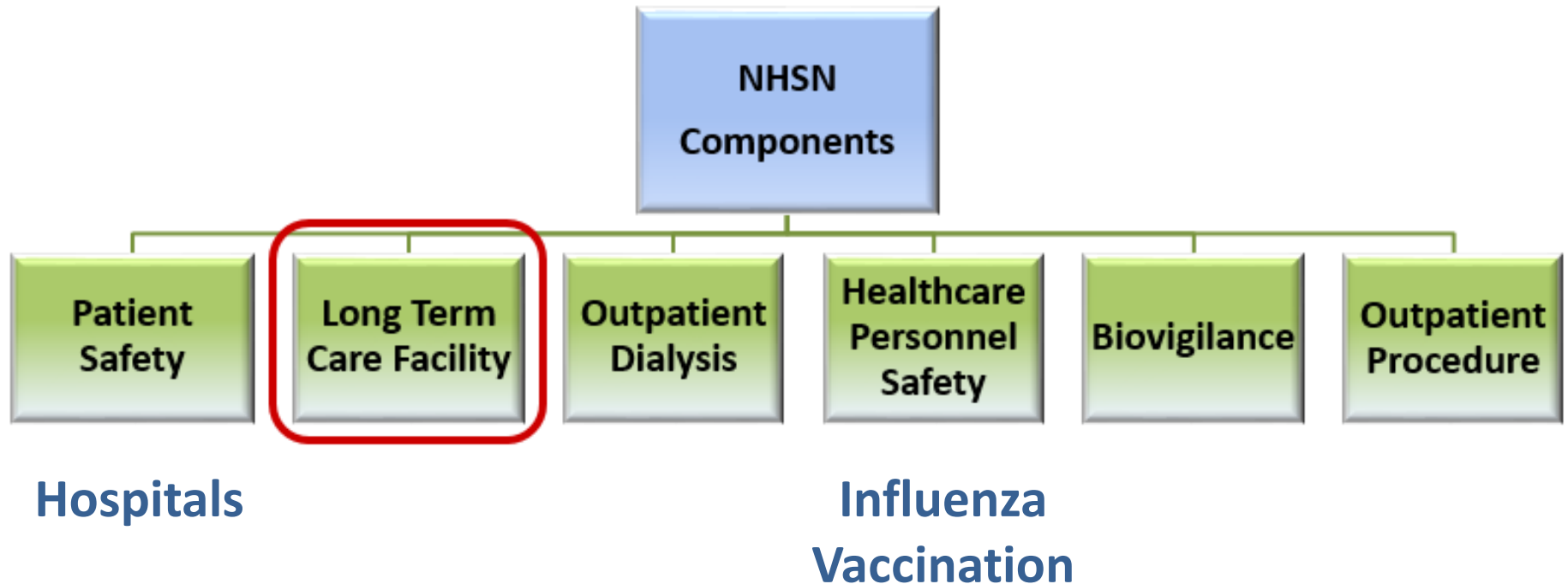
NHSN Strengths

- Provides standards for HAI surveillance
- Data are risk-adjusted for comparing to national data
- Web-based; data housed remotely
- Includes data quality checks
- Data analysis tools are built-in
- Expandable to many health care settings

NHSN Data Access

- Facilities own their NHSN surveillance data
 - May edit data at any time to improve accuracy and completeness
- Facilities may join NHSN groups to allow data access
 - Healthcare organizations and others can request or require member facilities for join their group
 - CDPH has a group for California SNF who wish to join
 - Facilities within a group cannot see each other's data

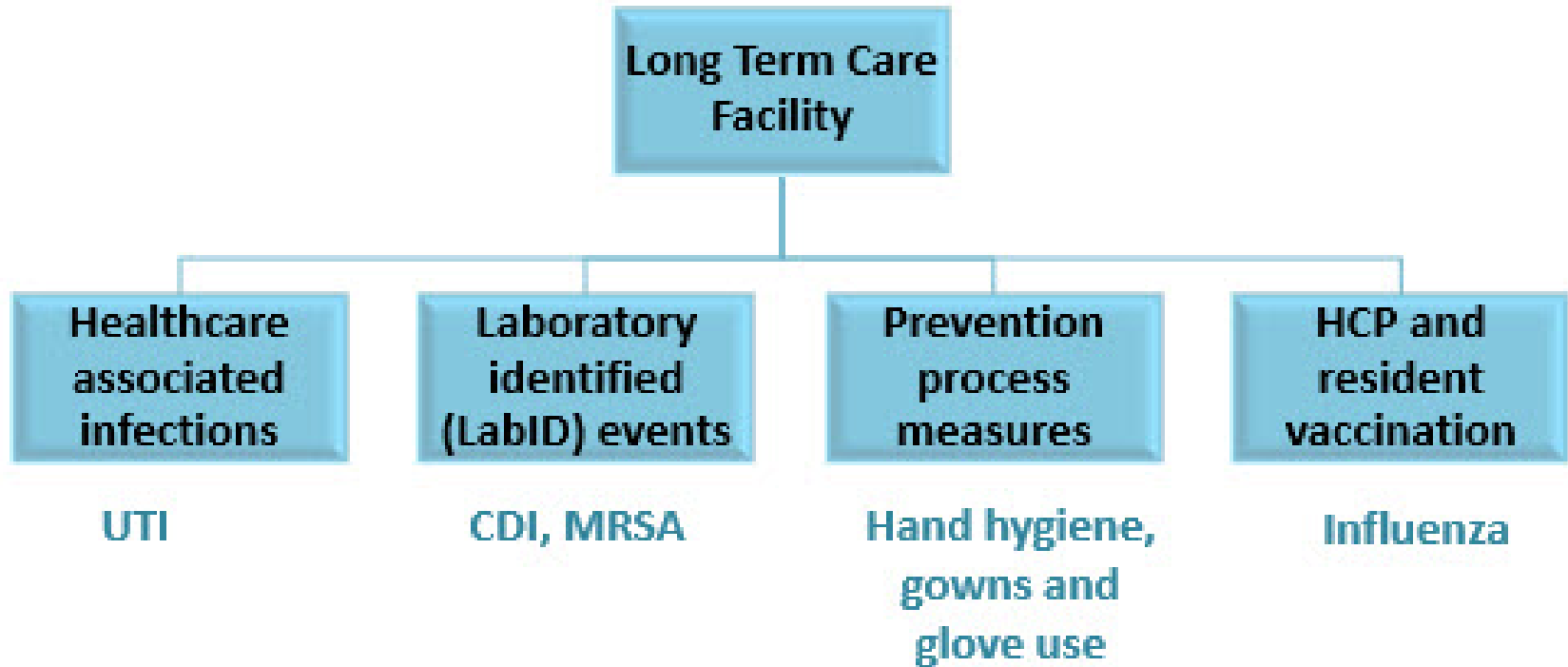
NHSN Structure



[NHSN Overview](#) (PDF)

(www.cdc.gov/nhsn/PDFs/pscManual/1PSC_OverviewCurrent.pdf)

NHSN Structure- LTC Facility Component



[NHSN Long-term Care Component](#)

(www.cdc.gov/nhsn/ltc/index.html)

NHSN Enrollment

Go to link at the bottom of the screen to learn more about NHSN

Click on “New to NHSN? Enroll facility here” to read about enrollment. You can read without enrolling yet!

[CDC NHSN](http://www.cdc.gov/nhsn)
(www.cdc.gov/nhsn)

National Healthcare Safety Network (NHSN)



CDC's National Healthcare Safety Network is the nation's most widely used healthcare-associated infection tracking system. NHSN provides facilities, states, regions, and the nation with data needed to identify problem areas, measure progress of prevention efforts, and ultimately eliminate healthcare-associated infections.

In addition, NHSN allows healthcare facilities to track blood safety errors and important healthcare process measures such as healthcare personnel influenza vaccine status and infection control adherence rates.



About NHSN

CDC's NHSN is the largest HAI reporting system in the U.S.

Data and Reports

See national and state reports using NHSN data.

Guidelines and Recommendations

Review CDC HAI prevention guidelines.

NHSN Member Login

New to NHSN? Enroll Facility Here

For first time facility enrollment.

Reporting and Surveillance for Enrolled Facilities

Training, protocols, forms, support materials, analysis resources and

Group Users

View resources for group users.

CDA Submission Support Portal (CSSP)

Toolkits, FAQs, webinars and resources for testing and validation

NHSN for Long Term Facilities

On NHSN enrollment page, click on Long Term Care Facilities for more information



Acute Care Hospitals / Facilities



Enrollment for urgent care or other short-term stay facilities (e.g. critical access facilities, oncology facilities, military/VA facilities)

[More](#)

Ambulatory Surgery Centers



Enrollment for outpatient surgery centers.

[More](#)

Long-term Acute Care Facilities



Enrollment for long-term acute care hospitals (LTACs).

[More](#)

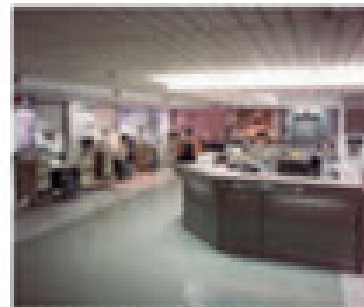
Long-term Care Facilities



Enrollment for nursing homes, assisted living and residential care, chronic care facilities and skilled nursing facilities.

[More](#)

Outpatient Dialysis Facilities



Enrollment for outpatient dialysis clinics.

[More](#)

Inpatient Rehabilitation Facilities



Enrollment for inpatient rehabilitation facilities.

[More](#)

Follow instructions
on the Enrollment
page for either
COVID-19 reporting



5-Step Enrollment for Long-term Care Facilities



[View enrollment steps for LTCFs only submitting COVID-19 data](#)



The below steps serve as a guide for Long-term Care Facilities (LTCFs) enrolling in the National Healthcare Safety Network (NHSN).

Once a facility is registered with NHSN, the Secure Access Management Services (SAMS) grid card must be used to continue with the NHSN enrollment process for the facility. If the designated facility NHSN user has not previously registered with SAMS and received a grid card, the user must complete the identity verification process with SAMS prior to gaining access to continue with the NHSN enrollment process for the facility.

A facility should only enroll **once** into the LTCF Component. Once a facility is enrolled, additional options become available, such as adding additional users and enrolling in additional Components.

Or

Enrollment for
reporting HAI and
HCP Influenza
Vaccination



Step 1: Enrollment Preparation

Training



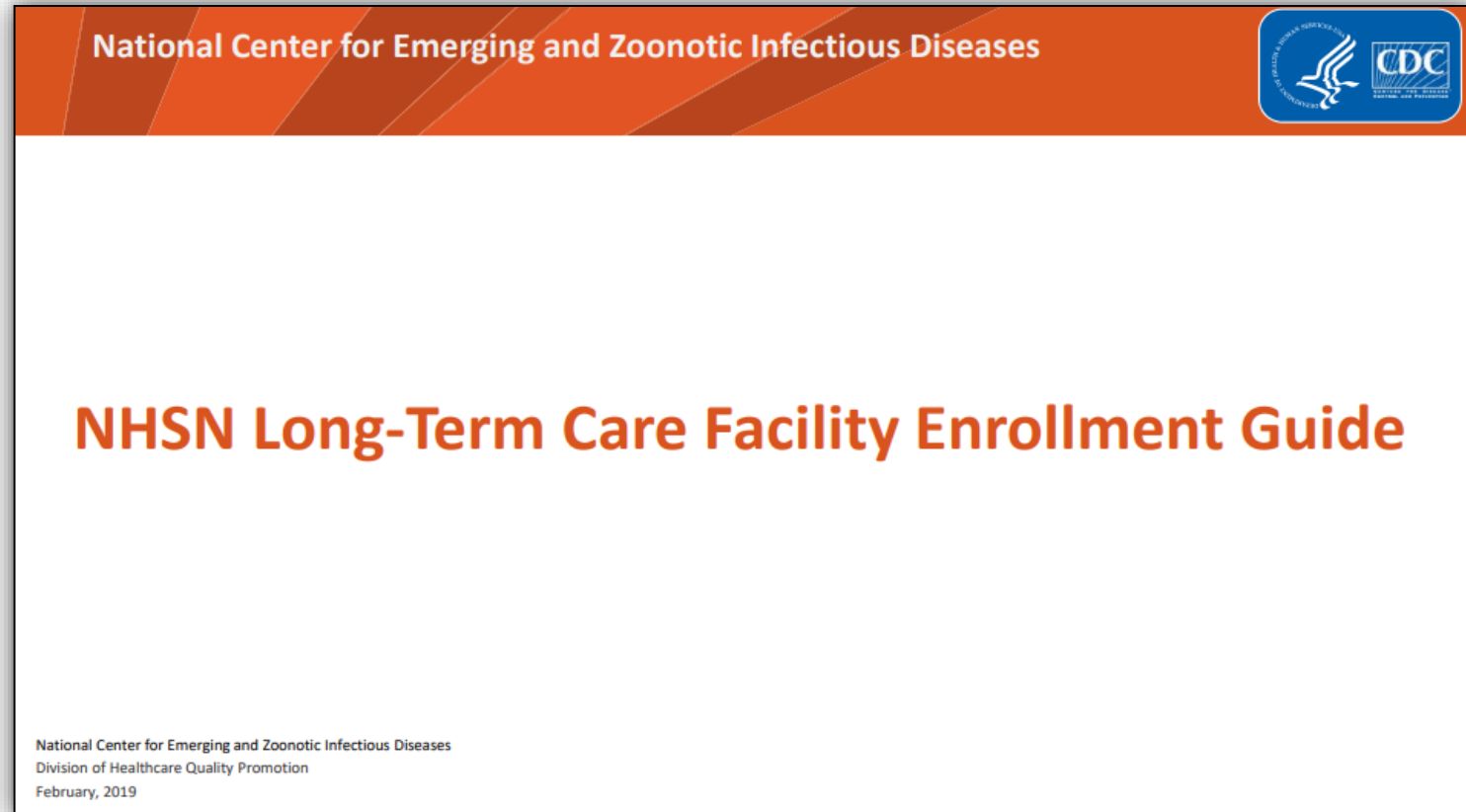
1. Complete required [LTCF Enrollment Training Guide](#).  [PDF - 6MB]

Note: The Enrollment training slides serve as a detailed guide through the enrollment process.

2. Check trusted websites and spam blocker settings.

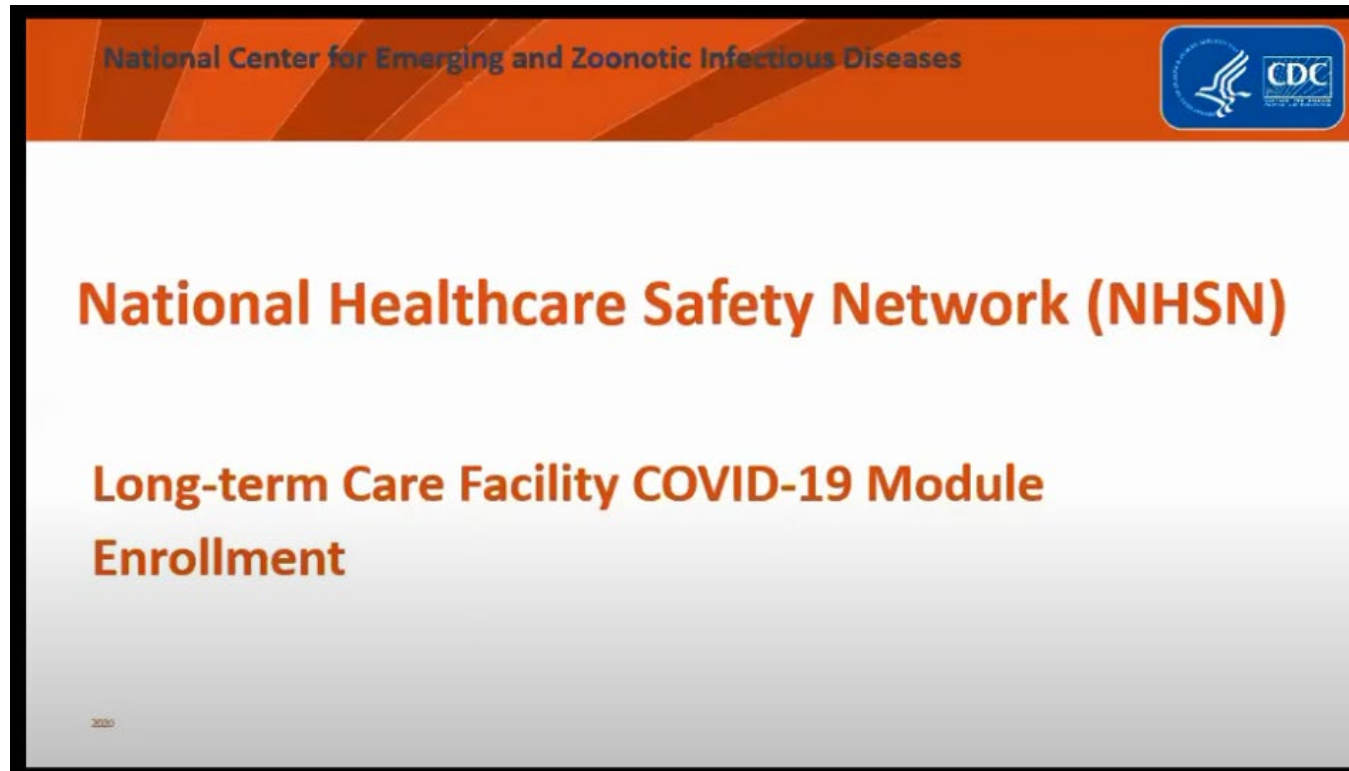
- In Internet Explorer, add cdc.gov and verisign.com to your list of trusted websites and permit pop-ups for these sites.
- Check spam-blocker settings to allow emails from NHSN@cdc.gov, SAMS-NO-REPLY@cdc.gov

NHSN SNF Enrollment Instructions: Slides



[CDC NHSN Long-Term Care Facility Enrollment Guide](http://www.cdc.gov/nhsn/pdfs/training/ltc/LTCF-Enrollment-training.pdf) (PDF)
(www.cdc.gov/nhsn/pdfs/training/ltc/LTCF-Enrollment-training.pdf)

NHSN COVID-19 Module – Slides or Video



[CDC NHSN LTCF COVID-19 Module Enrollment slides](#) (PDF)

(www.cdc.gov/nhsn/pdfs/covid19/lctf/covid19-enroll-refresh-508.pdf)

[CDC NHSN LTCF COVID-19 Module Enrollment recording](#)

(www.youtube.com/watch?v=iLb_rRgTvUw)



LTCF COVID-19 Module

Information and resources for reporting into the NHSN LTCF COVID-19 Module.

C. difficile Infection (CDI) and
Multidrug-resistant Organisms
(MDRO)

Urinary Tract Infections (UTI)

Prevention Process Measures

Hand Hygiene, Gloves and Gown Use Adherence

HCP and Resident Vaccination

Weekly Influenza Vaccination Reporting



TRAINING & EDUCATION



LTCF Component Manual

New! (PDF - 3 MB) - February 2020

A single document combining all LTCF protocols, data collection forms, form instructions, and other resources



Training Materials

NHSN LTCF annual training materials, videos, and

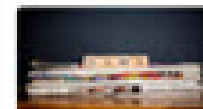
RESOURCES



Frequently Asked Questions

New! (PDF - 350 KB) - February 2020

Questions and answers categorized by topic



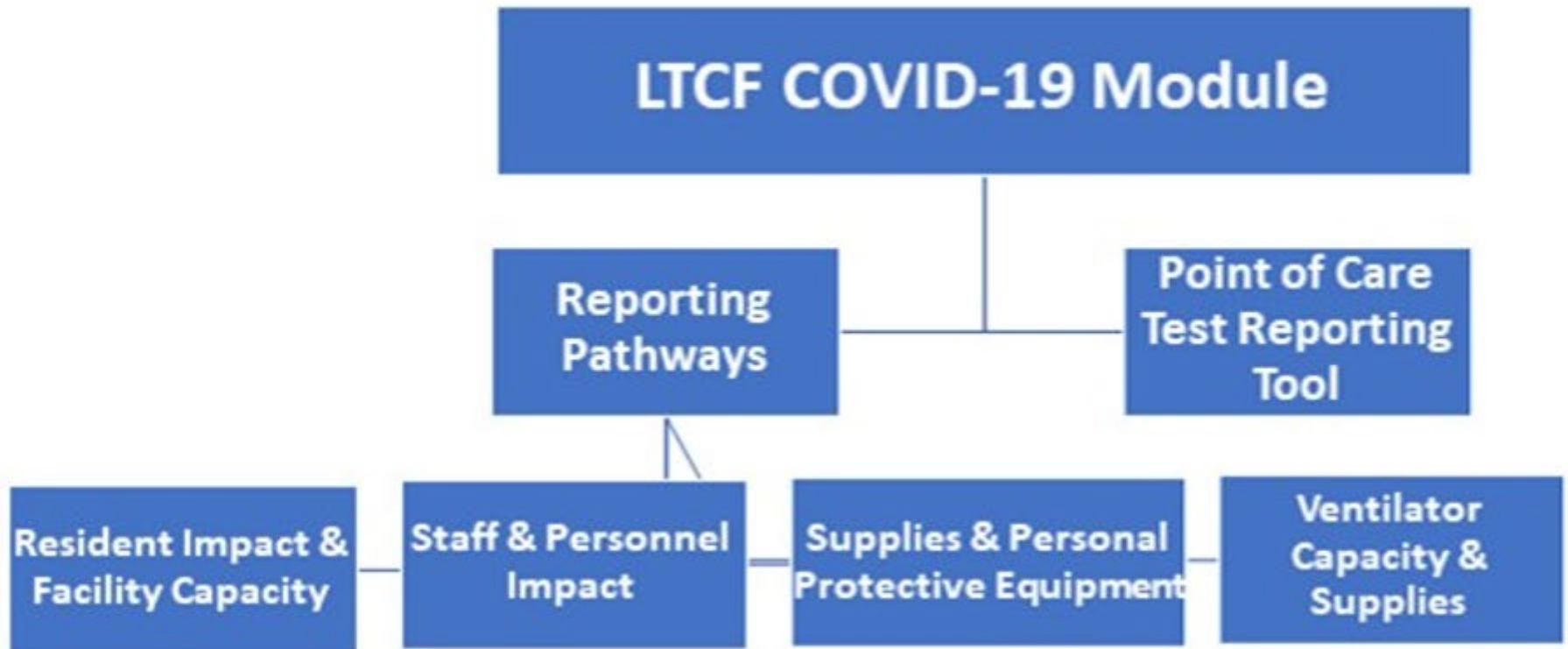
Newsletters & Archived Communications

Archived newsletters and email communications

[CDC NHSN LTCF Component](https://www.cdc.gov/nhsn/ltc/index.html)

(www.cdc.gov/nhsn/ltc/index.html)

NHSN LTCF COVID-19 Module



[CDC LTCF COVID-19 Module](https://www.cdc.gov/nhsn/ltc/covid19/index.html)

(www.cdc.gov/nhsn/ltc/covid19/index.html)

National Healthcare Safety Network (NHSN)

CDC > NHSN > Materials for Enrolled Facilities > Long-term Care Facilities

Surveillance for *C. difficile* Infection (CDI) and Multidrug Resistant Organisms (MDRO)

Resources for NHSN Users Already Enrolled

Training

Protocol

Data Collection Forms and Instructions

Supporting Material

Analysis Resources

FAQs

Resources to Help Prevent Infections

- [C.difficile Infections Tracking Tool](#) 

After Facility Enrollment is Complete

- Establish your monthly reporting plan
 - Tell NHSN what you will report
- Begin reporting infection “events”
- Report monthly summary data
 - Number of resident days
 - Number of indwelling catheter days
- If tracking hand hygiene or gown and glove use
 - Report number of observations and number of successful practices

NHSN Surveillance - UTI

Apply LTC facility UTI Surveillance definitions

- Two types of UTI, based on presence of device
 - UTI
 - Catheter-associated UTI (CAUTI)
- Use NHSN to track UTI data; reports can be easily created to map facility trends
- Information can be tracked based on:
 - Resident information
 - Date of infection occurrence
 - Location
 - Presence of urinary catheter

[CDC National Healthcare Safety Network \(NHSN\)](http://www.cdc.gov/nhsn/)

(www.cdc.gov/nhsn/)

NHSN Surveillance – CDI and MRSA

Tracked in the LabID MDRO Module

- Report date of resident admission and date of specimen collection
- No need to report resident symptoms
- NHSN calculates if community onset (present on admission) or facility onset
 - Positive specimen collected on **day 1-3** is community onset
 - Positive specimen collected on or **after day 4** is facility onset

NHSN Surveillance –Hand Hygiene, Gown and Gloves

Tracked in the Prevention Process Measures Module

- NHSN can be used to record and monitor use of hand hygiene, gowns and gloves
 - Information can be tracked over time and in different locations

[CDC National Healthcare Safety Network \(NHSN\)](http://www.cdc.gov/nhsn/)

(www.cdc.gov/nhsn/)

NHSN Daily COVID-19 Reporting

Add COVID-19 Data

Date for which counts are reported: 11/29/2020

Facility CCN: N/A

Facility Type: LTC-SKILLNURS

Resident Impact and Facility Capacity

Staff and Personnel Impact

Supplies and Personal Protective Equipment

Ventilator Capacity and Supplies

Date Created:

Counts should be reported on the correct calendar day and include only the new counts for the calendar day (specifically, since counts were last collected). If the count is zero, a "0" response is equivalent to missing data. **NON-count** questions should be answered one calendar day during the reporting week.

Facility Capacity

ALL BEDS (enter on first survey only, unless the total bed count has changed)

*CURRENT CENSUS: Total number of beds that are occupied on the reporting calendar day

Resident Impact for COVID-19 (SARS-CoV-2)

ADMISSIONS: Number of residents admitted or readmitted from another facility who were previously diagnosed with COVID-19 and continue to require precautions. Excludes recovered residents.

POSITIVE TESTS (previously called "Confirmed"): Number of residents with a new positive COVID-19 viral test result.

TEST TYPE: Of the number of reported residents above with a *Positive Test*, how many were tested using each of the following:

Positive SARS-CoV-2 antigen test **only** [no other testing performed]

Positive SARS-CoV-2 NAAT (PCR) [no other testing performed]

±Positive SARS-CoV-2 antigen test and negative SARS-CoV-2 NAAT (PCR)

±Any other combination of SARS-CoV-2 NAAT (PCR) and/or antigen test(s) with at least one positive test

Event Entry Page in NHSN

Specify Criteria Used * (check all that apply):

Signs & Symptoms

- Fever: Single temperature > 37.8° C (>100° F) or >37.2°C (>99°F) on repeated occasions, or an increase of > 1.1°C (>2°F) over baseline
- Rigors
- New onset confusion/functional decline
- New onset hypotension
- Acute pain, swelling or tenderness of the
- Acute dysuria
- Purulent drainage at catheter insertion

- All infections are entered as “Events”
 - UTI
 - CDI
- Screen will change when event type is selected
- Check appropriate signs and symptoms.

NHSN Analysis Options and Reports



Analysis Reports

Expand All Collapse All Search

- MDRO/CDI Module - LABID Event Reporting
- HAI Module
 - All UTI Events
 - Line Listing - All UTI Events
 - Rate Table - Total UTI Rate
 - Line Listing - All UTI Events with Catheter
 - Rate Table - CA-SUTI Incidence Rate
 - Line Listing - All UTI Events without Catheter
 - Rate Table - SUTI Incidence Rate
 - Rate Table - Total Urine Culture Rate
- Process Measures
- COVID-19 Module
- Advanced
- My Custom Reports
- Published Reports

- Reports are available to analyze your data
- NHSN compares your facility to a national standard based on HAI data from facilities across the US

Hand Hygiene / Gown and Glove Adherence

National Healthcare Safety Network Line Listing for All Process Measures

As of: March 15, 2018 at 3:30 PM

Date Range: LTCPM summaryYM 2017M10 to 2018M03

Facility Org ID	Summary Year/Month	Location	Hand Hygiene Performed	Hand Hygiene Indicated	Gown/Glove Used	Gown/Glove Indicated
30203	2017M10	FACWIDEIN	45	75	50	55
30203	2017M11	FACWIDEIN	62	75	40	43
30203	2017M12	FACWIDEIN	62	75	30	30
30203	2018M01	FACWIDEIN	44	52	42	44
30203	2018M02	FACWIDEIN	52	70	60	61

UTI Report

Facility Org ID	Resident ID	Date of Current Admission	Event ID	Event Date	Specific Event	Urinary Catheter Status	Location
30203	W00001	03/01/2016	5864	12/12/2017	CA-SUTI	INPLACE	2F
30203	WI1234	10/25/2013	9281	01/06/2018	CA-SUTI	INPLACE	EAST WING
30203	W00001	04/01/2016	5856	10/24/2017	SUTI	NEITHER	EAST WING
30203	UTITESTPROD	03/09/2017	8481	01/12/2018	SUTI	NEITHER	Z-1E

CDI Reports

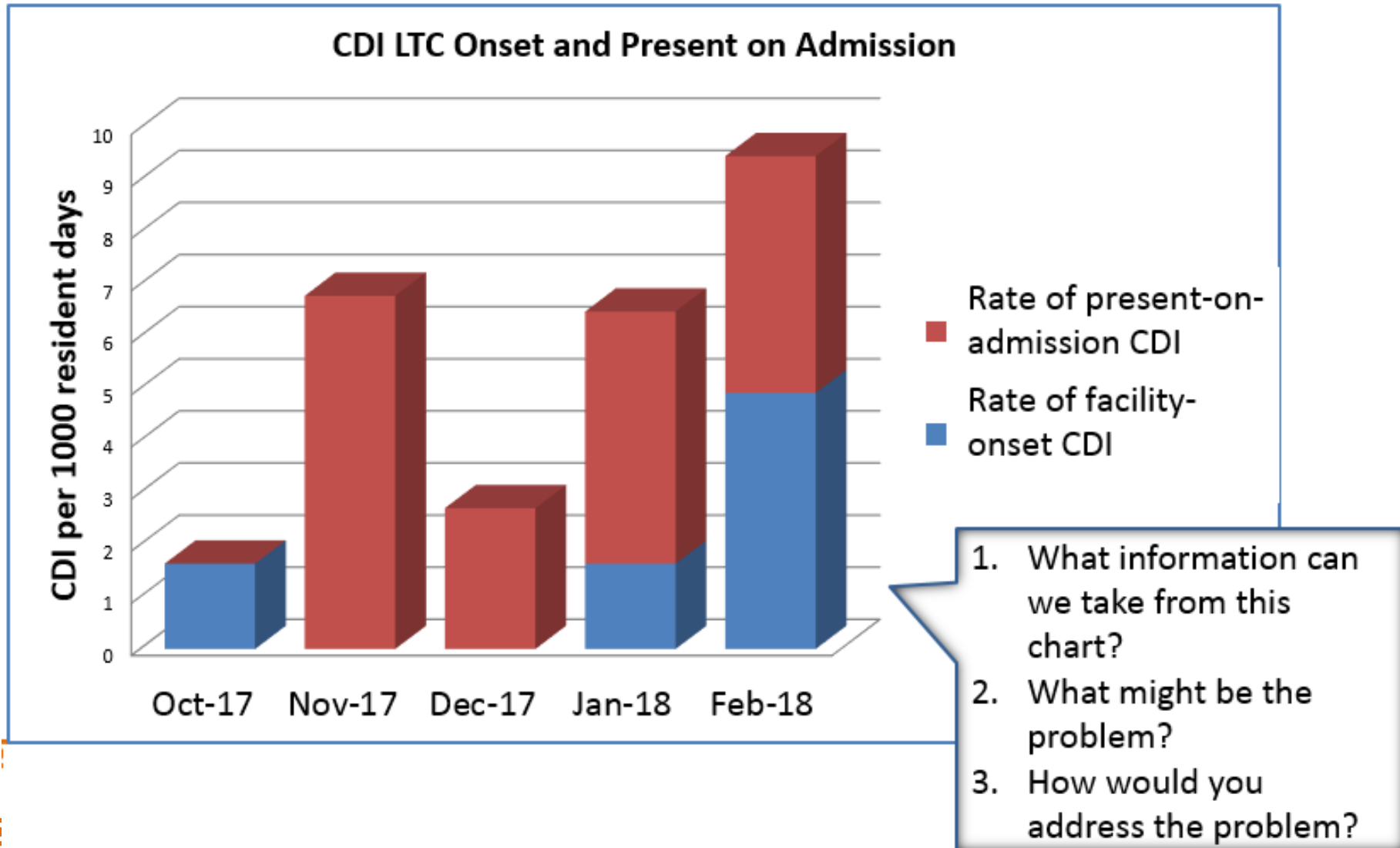
Total CDI Rate

Summary Year/Month	Location	Total CDI Count	Number of Resident Days	Total CDI Rate
2017M10	FACWIDEIN	1	6100	1.639
2017M11	FACWIDEIN	0	6108	0
2017M12	FACWIDEIN	0	6102	0
2018M01	FACWIDEIN			
2018M02	FACWIDEIN			

CDI Treatment Prevalence on Admission

Summary Year/Month	Location	Admissions on C. diff Treatment	Number of Resident Admissions	CDI Treatment Prevalence
2017M10	FACWIDEIN	0	60	0
2017M11	FACWIDEIN	4	59	6.78
2017M12	FACWIDEIN	2	74	2.703
2018M01	FACWIDEIN	3	62	4.839
2018M02	FACWIDEIN	3	66	4.545

CDI Graph



Summary

- NHSN is a surveillance system used for recording HAI and COVID-19 data
- NHSN has analysis features for interpreting data and comparing infection rates over time
- See training and other [CDC National Healthcare Safety Network \(NHSN\) resources](https://www.cdc.gov/nhsn/)
(www.cdc.gov/nhsn/)

Questions?

For more information,
please contact

HAIProgram@cdph.ca.gov

Include “SNF IP Training Class”
in the subject line

Post Test

Now that you have completed
this module,

Click on the “Post Test” link
when it pops up

To Return to

Learning Stream

and take the post test

*If the Post Test link does not pop up,
you will be sent a link via e-mail*