



Pertussis Snapshot

Reported as of April 30, 2022

Figure 1. Year to date* pertussis case counts by week of onset -- California, 2017-2022

Case counts will increase due to reporting delays

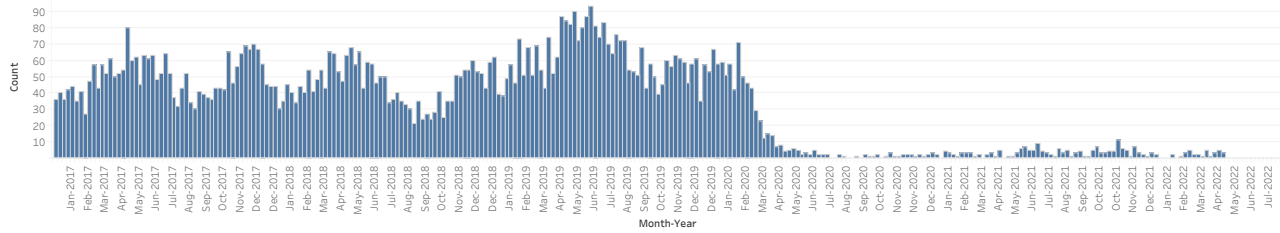


Table 1. Cumulative and year to date* pertussis case counts by health jurisdiction and year of onset -- 2017-2022

Jurisdiction†	2017		2018		2019		2020		2021		2022	
	Total*	YTD Cases	Total*	YTD Cases	Total*	YTD Cases	Total*	YTD Cases	Total*	YTD Cases	Total*	YTD Cases
CALIFORNIA	2,591	778	2,326	788	3,230	996	701	637	172	37	36	36
ALAMEDA	79	23	187	70	90	34	25	23	4	1	0	0
BERKELEY	8	3	8	5	4	0	2	0	0	0	0	0
BUTTE	4	0	6	4	5	0	4	3	2	0	0	0
CALAVERAS	0	0	0	0	0	0	1	0	0	0	0	0
CONTRA COSTA	43	7	58	25	56	8	17	17	7	2	1	1
DEL NORTE	0	0	0	0	0	0	7	5	0	0	0	0
EL DORADO	5	0	0	0	1	1	6	6	0	0	0	0
FRESNO	36	4	65	14	64	24	9	8	1	0	0	0
HUMBOLDT	0	0	0	0	5	0	2	1	0	0	0	0
IMPERIAL	0	0	4	0	15	1	4	4	1	1	0	0
INYO	4	0	0	0	0	0	1	0	0	0	1	1
KERN	16	8	32	11	55	9	22	20	2	0	0	0
KINGS	0	0	2	0	6	2	3	3	1	0	0	0
LAKE	8	0	0	0	0	0	0	0	1	0	0	0
LOS ANGELES‡	476	163	416	107	1,008	333	87	82	0	0	0	0
LONG BEACH	19	1	21	4	55	27	9	9	0	0	1	1
PASADENA	4	2	3	0	12	7	2	2	2	1	1	1
MADERA	7	3	24	3	29	10	3	2	2	0	5	5
MARIN	28	12	90	41	27	16	5	5	0	0	0	0
MARIPOSA	0	0	3	0	1	0	0	0	0	0	0	0
MENDOCINO	2	1	0	0	3	2	1	1	0	0	0	0
MERCED	1	0	9	2	8	3	0	0	0	0	0	0
MODOC	0	0	0	0	0	0	1	0	0	0	0	0
MONO	0	0	0	0	0	0	0	0	1	0	0	0
MONTEREY	24	4	28	4	55	8	18	17	2	1	1	1
NAPA	11	0	14	2	14	6	9	7	1	0	0	0
NEVADA	2	1	12	0	6	0	3	3	0	0	1	1
ORANGE	187	43	144	59	151	40	40	39	9	3	1	1
PLACER	77	21	19	14	29	2	8	6	1	0	0	0
PLUMAS	0	0	0	0	1	0	0	0	2	0	0	0
RIVERSIDE	125	31	53	17	76	19	22	22	33	6	2	2
SACRAMENTO	51	9	84	43	98	34	43	38	5	1	3	3
SAN BENITO	1	1	0	0	4	2	1	1	0	0	0	0
SAN BERNARDINO	35	11	18	8	41	6	10	8	0	0	2	2
SAN DIEGO	911	268	434	194	630	153	219	201	67	15	16	16
SAN FRANCISCO	30	10	29	3	29	11	6	4	1	0	0	0
SAN JOAQUIN	5	0	22	4	17	0	2	2	1	0	0	0
SAN LUIS OBISPO	14	3	13	0	18	6	5	4	6	1	0	0
SAN MATEO	45	22	58	27	48	22	13	13	2	0	0	0
SANTA BARBARA	8	2	17	7	17	4	10	10	2	2	0	0
SANTA CLARA	153	79	149	61	172	58	18	16	4	2	0	0
SANTA CRUZ	39	6	149	13	211	91	20	20	2	0	0	0
SHASTA	1	1	0	0	6	2	0	0	2	0	0	0
SISKIYOU	3	1	0	0	0	0	2	2	0	0	0	0
SOLANO	14	4	4	0	2	1	3	3	0	0	1	1
SONOMA	13	3	70	17	21	13	5	0	0	0	0	0
STANISLAUS	5	2	10	0	22	10	2	2	0	0	0	0
SUTTER	2	0	0	0	1	0	1	0	1	0	0	0
TEHAMA	1	0	0	0	0	0	0	0	0	0	0	0
TRINITY	0	0	0	0	1	0	0	0	0	0	0	0
TULARE	11	3	7	2	28	6	5	3	5	1	0	0
TUOLUMNE	5	5	1	0	1	0	0	0	0	0	0	0
VENTURA	56	10	50	19	72	23	18	15	2	0	0	0
YOLO	4	0	10	6	14	2	3	3	0	0	0	0
YUBA	18	11	3	2	1	0	4	0	0	0	0	0

Table 2. Cumulative and year to date* pertussis case counts and deaths among infants <4 months of age by year of onset -- California, 2017-2022

	2017		2018		2019		2020		2021		2022	
	Total*	Deaths*	Total*	Deaths*	Total*	Deaths*	Total*	Deaths*	Total*	Deaths*	Total*	Deaths*
CALIFORNIA	112	0	119	1	180	1	45	0	8	0	3	0

* Total counts include cases for the entire year; year to date (YTD) counts include cases reported with an onset date between January 1 and April 30. Total and YTD counts for the current year will be the same.

† Counties with no cases reported between 2017-2022 are excluded from the table above. City health jurisdictions (Berkeley, Pasadena, and Long Beach) are excluded from county total.

‡ Due to delays in reporting, CDPH will include preliminary Los Angeles County cases in order to effectively track the epidemiology of pertussis in the state effective August 19, 2019.

Notes:

- This report should be viewed as a preliminary "snapshot" of pertussis activity. Because data are preliminary, the information may be updated in later reports as additional case reports are received.

- Reports include probable and confirmed cases based on the Council of State and Territorial Epidemiologists (CSTE) case definition current at the year of report. Case counts reflect a case definition change in 2020.