



Pertussis Snapshot

Reported as of January 31, 2022

Figure 1. Year to date* pertussis case counts by week of onset -- California, 2017-2022

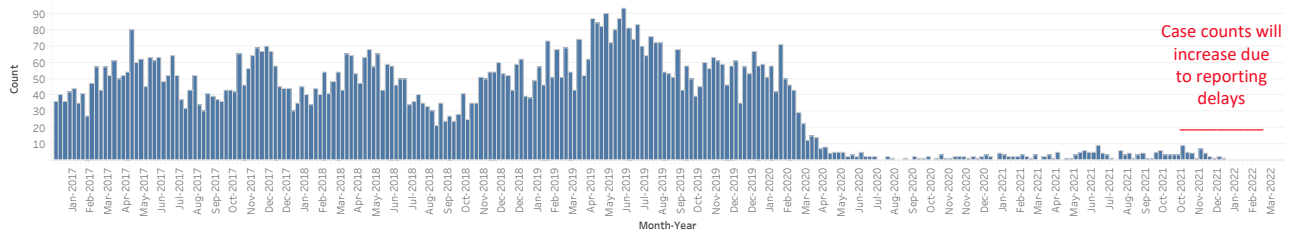


Table 1. Cumulative and year to date* pertussis case counts by health jurisdiction and year of onset -- 2017-2022

Jurisdiction†	2017		2018		2019		2020		2021		2022	
	Total*	YTD Cases	Total*	YTD Cases	Total*	YTD Cases	Total*	YTD Cases	Total*	YTD Cases	Total*	YTD Cases
CALIFORNIA	2,591	170	2,326	164	3,230	203	699	257	161	11	1	1
ALAMEDA	79	5	187	7	90	4	25	7	4	1	0	0
BERKELEY	8	0	8	1	4	0	2	0	0	0	0	0
BUTTE	4	0	6	0	5	0	4	1	1	0	0	0
CALAVERAS	0	0	0	0	0	0	1	0	0	0	0	0
CONTRA COSTA	43	1	58	5	56	2	17	6	7	0	0	0
DEL NORTE	0	0	0	0	0	0	6	3	0	0	0	0
EL DORADO	5	0	0	0	1	1	6	3	0	0	0	0
FRESNO	36	3	65	1	64	4	9	1	1	0	0	0
HUMBOLDT	0	0	0	0	5	0	2	0	0	0	0	0
IMPERIAL	0	0	4	0	15	1	4	0	1	0	0	0
INYO	4	0	0	0	0	0	1	0	0	0	0	0
KERN	16	3	32	3	55	3	22	9	1	0	0	0
KINGS	0	0	2	0	6	0	3	0	0	0	0	0
LAKE	8	0	0	0	0	0	0	0	1	0	0	0
LOS ANGELES‡	476	40	416	25	1,008	67	87	41	0	0	0	0
LONG BEACH	19	0	21	2	55	5	9	1	0	0	0	0
PASADENA	4	0	3	0	12	2	2	1	2	0	0	0
MADERA	7	1	24	1	29	1	3	1	2	0	0	0
MARIN	28	6	90	1	27	6	5	1	0	0	0	0
MARIPOSA	0	0	3	0	1	0	0	0	0	0	0	0
MENDOCINO	2	0	0	0	3	0	1	0	1	0	0	0
MERCED	1	0	9	1	8	1	0	0	0	0	0	0
MODOC	0	0	0	0	0	0	1	0	0	0	0	0
MONTEREY	24	0	28	1	55	3	18	9	2	0	0	0
NAPA	11	0	14	0	14	4	9	4	1	0	0	0
NEVADA	2	0	12	0	6	0	3	2	0	0	0	0
ORANGE	187	7	144	14	151	3	40	21	9	2	0	0
PLACER	77	2	19	6	29	0	8	2	1	0	0	0
PLUMAS	0	0	0	0	1	0	0	0	1	0	0	0
RIVERSIDE	125	4	53	5	76	2	22	12	30	2	0	0
SACRAMENTO	51	2	84	13	98	9	43	15	6	0	0	0
SAN BENITO	1	0	0	0	4	0	1	0	0	0	0	0
SAN BERNARDINO	35	3	18	2	41	1	10	2	0	0	0	0
SAN DIEGO	911	47	434	56	630	33	219	85	66	5	1	1
SAN FRANCISCO	30	1	29	0	29	6	6	2	1	0	0	0
SAN JOAQUIN	5	0	22	2	17	0	2	0	1	0	0	0
SAN LUIS OBISPO	14	0	13	0	18	3	5	2	6	0	0	0
SAN MATEO	45	9	58	8	48	6	12	7	2	0	0	0
SANTA BARBARA	8	0	17	1	17	0	10	3	2	0	0	0
SANTA CLARA	153	25	149	4	172	12	18	4	4	0	0	0
SANTA CRUZ	39	0	149	2	211	13	20	7	2	0	0	0
SHASTA	1	0	0	0	6	0	0	0	2	0	0	0
SISKIYOU	3	0	0	0	0	0	2	0	0	0	0	0
SOLANO	14	2	4	0	2	0	3	1	0	0	0	0
SONOMA	13	3	70	2	21	5	5	0	0	0	0	0
STANISLAUS	5	0	10	0	22	3	2	1	0	0	0	0
SUTTER	2	0	0	0	1	0	1	0	1	0	0	0
TEHAMA	1	0	0	0	0	0	0	0	0	0	0	0
TRINITY	0	0	0	0	1	0	0	0	0	0	0	0
TULARE	11	0	7	0	28	0	5	0	1	1	0	0
TUOLUMNE	5	5	1	0	1	0	0	0	0	0	0	0
VENTURA	56	1	50	0	72	3	18	3	2	0	0	0
YOLO	4	0	10	1	14	0	3	0	0	0	0	0
YUBA	18	0	3	0	1	0	4	0	0	0	0	0

Table 2. Cumulative and year to date* pertussis case counts and deaths among infants <4 months of age by year of onset -- California, 2017-2022

Jurisdiction	2017		2018		2019			2020			2021		
	Total*	YTD Cases	Total*	YTD Cases	Total*	YTD Cases	Deaths*	Total*	YTD Cases	Total*	YTD Cases	Deaths*	
CALIFORNIA	112	8	119	15	180	8	1	44	11	8	0	0	

No cases <4 months of age reported as of January 31, 2022

* Total counts include cases for the entire year; year to date (YTD) counts include cases reported with an onset date between January 1 and January 31. Total and YTD counts for the current year will be the same.
 † Counties with no cases reported between 2017-2022 are excluded from the table above. City health jurisdictions (Berkeley, Pasadena, and Long Beach) are excluded from county total.
 ‡ Due to delays in reporting, CDPH will include preliminary Los Angeles County cases in order to effectively track the epidemiology of pertussis in the state effective August 19, 2019.

Notes:

- This report should be viewed as a preliminary "snapshot" of pertussis activity. Because data are preliminary, the information may be updated in later reports as additional case reports are received.
- Reports include probable and confirmed cases based on the Council of State and Territorial Epidemiologists (CSTE) case definition current at the year of report. Case counts reflect a case definition change in 2020.