



Pertussis Snapshot

Reported as of June 30, 2022

Figure 1. Year to date* pertussis case counts by week of onset -- California, 2017-2022

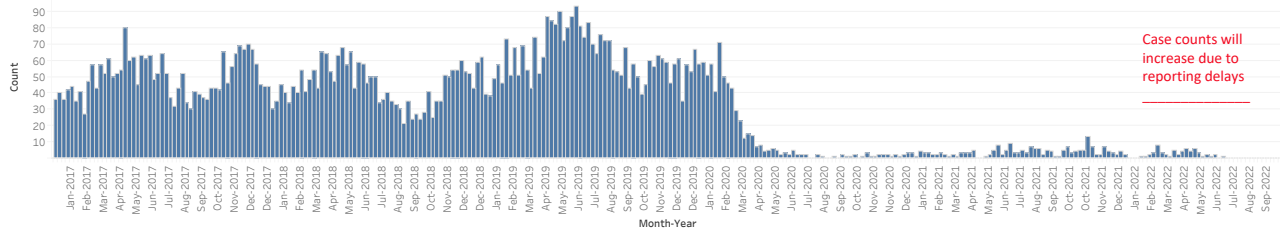


Table 1. Cumulative and year to date* pertussis case counts by health jurisdiction and year of onset -- 2017-2022

Jurisdiction†	2017		2018		2019		2020		2021		2022	
	Total*	YTD Cases	Total*	YTD Cases	Total*	YTD Cases	Total*	YTD Cases	Total*	YTD Cases	Total*	YTD Cases
CALIFORNIA	2,591	1,297	2,326	1,283	3,230	1,716	700	667	193	76	61	61
ALAMEDA	79	31	187	140	90	52	25	24	4	2	0	0
BERKELEY	8	4	8	7	4	1	2	2	0	0	0	0
BUTTE	4	0	6	6	5	4	4	4	0	0	0	0
CALAVERAS	0	0	0	0	0	0	1	0	0	0	0	0
CONTRA COSTA	43	11	58	48	56	26	17	17	7	4	2	2
DEL NORTE	0	0	0	0	0	0	7	7	0	0	0	0
EL DORADO	5	2	0	0	1	1	6	6	0	0	0	0
FRESNO	36	12	65	28	64	36	9	9	1	0	0	0
HUMBOLDT	0	0	0	0	5	3	2	2	0	0	0	0
IMPERIAL	0	0	4	0	15	10	4	4	0	0	0	0
INYO	4	0	0	0	0	0	1	0	0	0	1	1
KERN	16	8	32	18	55	18	22	22	1	0	1	1
KINGS	0	0	2	0	6	4	3	3	1	0	0	0
LAKE	8	1	0	0	0	0	0	0	1	1	0	0
LOS ANGELES‡	476	278	416	188	1,008	583	86	83	44	12	0	0
LONG BEACH	19	3	21	8	55	35	9	9	0	0	1	1
PASADENA	4	3	3	0	12	10	2	2	1	0	1	1
MADERA	7	3	24	6	29	24	3	2	0	0	7	7
MARIN	28	19	90	65	27	19	5	5	0	0	0	0
MARIPOSA	0	0	3	0	1	1	0	0	0	0	0	0
MENDOCINO	2	1	0	0	3	3	1	1	0	0	0	0
MERCED	1	0	9	3	8	5	0	0	0	0	0	0
MODOC	0	0	0	0	0	0	1	0	0	0	0	0
MONO	0	0	0	0	0	0	0	0	1	0	0	0
MONTEREY	24	15	28	4	55	26	18	17	2	2	1	1
NAPA	11	3	14	4	14	8	9	9	0	0	2	2
NEVADA	2	1	12	2	6	0	3	3	0	0	0	0
ORANGE	187	77	144	88	151	52	40	39	9	4	1	1
PLACER	77	29	19	17	29	8	8	8	1	1	0	0
PLUMAS	0	0	0	0	1	0	0	0	0	0	0	0
RIVERSIDE	125	73	53	29	76	40	22	22	17	6	4	4
SACRAMENTO	51	23	84	66	98	59	43	42	9	6	4	4
SAN BENITO	1	1	0	0	4	2	1	1	0	0	0	0
SAN BERNARDINO	35	15	18	10	41	12	10	9	0	0	2	2
SAN DIEGO	911	459	434	267	630	248	219	208	70	27	30	30
SAN FRANCISCO	30	13	29	12	29	18	6	4	1	0	0	0
SAN JOAQUIN	5	0	22	8	17	8	2	2	1	1	0	0
SAN LUIS OBISPO	14	7	13	3	18	11	5	5	4	1	1	1
SAN MATEO	45	27	58	40	48	27	13	13	2	1	0	0
SANTA BARBARA	8	3	17	7	17	8	10	10	2	2	0	0
SANTA CLARA	153	107	149	100	172	122	18	17	4	2	0	0
SANTA CRUZ	39	12	149	21	211	135	20	20	2	1	0	0
SHASTA	1	1	0	0	6	2	0	0	2	0	1	1
SISKIYOU	3	2	0	0	0	0	2	0	0	0	0	0
SOLANO	14	6	4	2	2	1	3	3	0	0	1	1
SONOMA	13	4	70	38	21	19	5	5	0	0	0	0
STANISLAUS	5	4	10	1	22	15	2	2	0	0	0	0
SUTTER	2	1	0	0	1	1	1	0	0	0	0	0
TEHAMA	1	0	0	0	0	0	0	0	0	0	0	0
TRINITY	0	0	0	0	1	0	0	0	0	0	0	0
TULARE	11	3	7	3	28	10	5	3	4	2	0	0
TUOLUMNE	5	5	1	1	1	0	0	0	0	0	0	0
VENTURA	56	18	50	32	72	44	18	17	2	1	0	0
YOLO	4	0	10	9	14	5	3	3	0	0	1	1
YUBA	18	12	3	2	1	0	4	1	0	0	0	0

Table 2. Cumulative and year to date* pertussis case counts and deaths among infants <4 months of age by year of onset -- California, 2017-2022

	2017		2018		2019		2020		2021		2022	
	Total*	Deaths*	Total*	Deaths*	Total*	Deaths*	Total*	Deaths*	Total*	Deaths*	Total*	Deaths*
CALIFORNIA	112	0	119	1	180	1	45	0	11	0	5	0

* Total counts include cases for the entire year; year to date (YTD) counts include cases reported with an onset date between January 1 and June 30. Total and YTD counts for the current year will be the same.

† Counties with no cases reported between 2017-2022 are excluded from the table above. City health jurisdictions (Berkeley, Pasadena, and Long Beach) are excluded from county total.

‡ Due to delays in reporting, CDPH will include preliminary Los Angeles County cases in order to effectively track the epidemiology of pertussis in the state effective August 19, 2019.

Notes:

- This report should be viewed as a preliminary "snapshot" of pertussis activity. Because data are preliminary, the information may be updated in later reports as additional case reports are received.

- Reports include probable and confirmed cases based on the Council of State and Territorial Epidemiologists (CSTE) case definition current at the year of report. Case counts reflect a case definition change in 2020.