



Pertussis Snapshot

Reported as of May 31, 2022

Figure 1. Year to date* pertussis case counts by week of onset -- California, 2017-2022

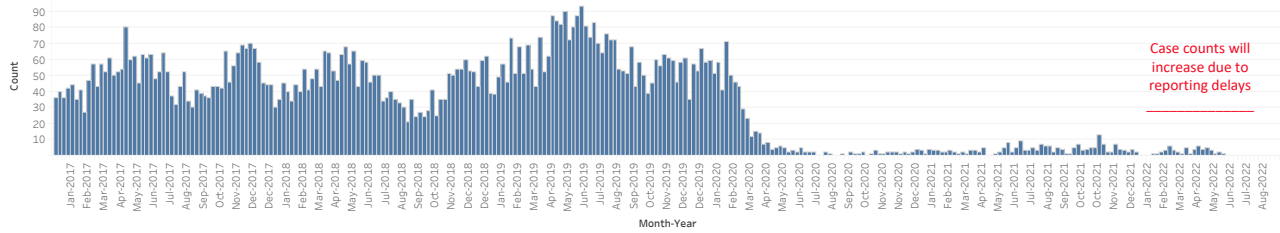


Table 1. Cumulative and year to date* pertussis case counts by health jurisdiction and year of onset -- 2017-2022

Jurisdiction†	2017		2018		2019		2020		2021		2022	
	Total*	YTD Cases	Total*	YTD Cases	Total*	YTD Cases	Total*	YTD Cases	Total*	YTD Cases	Total*	YTD Cases
CALIFORNIA	2,591	1,050	2,326	1,058	3,230	1,347	701	655	192	51	54	54
ALAMEDA	79	26	187	119	90	38	25	23	4	2	0	0
BERKELEY	8	4	8	6	4	0	2	0	0	0	0	0
BUTTE	4	0	6	6	5	3	4	3	0	0	0	0
CALAVERAS	0	0	0	0	0	0	1	0	0	0	0	0
CONTRA COSTA	43	9	58	39	56	12	17	17	7	2	2	2
DEL NORTE	0	0	0	0	0	0	7	7	0	0	0	0
EL DORADO	5	1	0	0	1	1	6	6	0	0	0	0
FRESNO	36	8	65	19	64	30	9	9	1	0	0	0
HUMBOLDT	0	0	0	0	5	0	2	2	0	0	0	0
IMPERIAL	0	0	4	0	15	4	4	4	0	0	0	0
INYO	4	0	0	0	0	0	1	0	0	0	1	1
KERN	16	8	32	14	55	14	22	21	1	0	1	1
KINGS	0	0	2	0	6	3	3	3	1	0	0	0
LAKE	8	0	0	0	0	0	0	0	1	0	0	0
LOS ANGELES‡	476	213	416	140	1,008	459	86	83	43	8	0	0
LONG BEACH	19	2	21	4	55	31	9	9	0	0	1	1
PASADENA	4	2	3	0	12	10	2	2	1	0	1	1
MADERA	7	3	24	4	29	18	3	2	0	0	7	7
MARIN	28	17	90	54	27	18	5	5	0	0	0	0
MARIPOSA	0	0	3	0	1	0	0	0	0	0	0	0
MENDOCINO	2	1	0	0	3	2	1	1	0	0	0	0
MERCED	1	0	9	3	8	5	0	0	0	0	0	0
MODOC	0	0	0	0	0	0	1	0	0	0	0	0
MONO	0	0	0	0	0	0	0	0	1	0	0	0
MONTEREY	24	10	28	4	55	13	18	17	2	2	1	1
NAPA	11	0	14	4	14	7	9	7	0	0	1	1
NEVADA	2	1	12	0	6	0	3	3	0	0	0	0
ORANGE	187	54	144	77	151	45	40	39	9	4	1	1
PLACER	77	24	19	14	29	8	8	6	1	1	0	0
PLUMAS	0	0	0	0	1	0	0	0	0	0	0	0
RIVERSIDE	125	48	53	21	76	29	22	22	17	4	4	4
SACRAMENTO	51	18	84	59	98	48	43	42	9	4	3	3
SAN BENITO	1	1	0	0	4	2	1	1	0	0	0	0
SAN BERNARDINO	35	15	18	8	41	8	10	9	0	0	2	2
SAN DIEGO	911	386	434	236	630	198	220	204	70	17	26	26
SAN FRANCISCO	30	13	29	4	29	15	6	4	1	0	0	0
SAN JOAQUIN	5	0	22	7	17	1	2	2	1	0	0	0
SAN LUIS OBISPO	14	6	13	0	18	8	5	5	4	1	1	1
SAN MATEO	45	24	58	31	48	24	13	13	2	0	0	0
SANTA BARBARA	8	3	17	7	17	6	10	10	2	2	0	0
SANTA CLARA	153	97	149	85	172	88	18	17	4	2	0	0
SANTA CRUZ	39	8	149	21	211	120	20	20	2	0	0	0
SHASTA	1	1	0	0	6	2	0	0	2	0	1	1
SISKIYOU	3	2	0	0	0	0	2	0	0	0	0	0
SOLANO	14	4	4	0	2	1	3	3	0	0	1	1
SONOMA	13	3	70	34	21	18	5	5	0	0	0	0
STANISLAUS	5	3	10	1	22	12	2	2	0	0	0	0
SUTTER	2	1	0	0	1	1	1	0	0	0	0	0
TEHAMA	1	0	0	0	0	0	0	0	0	0	0	0
TRINITY	0	0	0	0	1	0	0	0	0	0	0	0
TULARE	11	3	7	3	28	7	5	3	4	1	0	0
TUOLUMNE	5	5	1	0	1	0	0	0	0	0	0	0
VENTURA	56	15	50	25	72	34	18	16	2	1	0	0
YOLO	4	0	10	7	14	4	3	3	0	0	0	0
YUBA	18	11	3	2	1	0	4	1	0	0	0	0

Table 2. Cumulative and year to date* pertussis case counts and deaths among infants <4 months of age by year of onset -- California, 2017-2022

	Year of Onset											
	2017		2018		2019		2020		2021		2022	
	Total*	Deaths*	YTD Cases	Total*	Total Deaths*	YTD Cases	Total*	Total Deaths*	YTD Cases	Total*	Total Deaths*	YTD Cases
CALIFORNIA	112	0	44	119	1	53	180	1	66	45	0	43
										11	0	2
										4	0	4

* Total counts include cases for the entire year; year to date (YTD) counts include cases reported with an onset date between January 1 and May 31. Total and YTD counts for the current year will be the same.

† Counties with no cases reported between 2017-2022 are excluded from the table above. City health jurisdictions (Berkeley, Pasadena, and Long Beach) are excluded from county total.

‡ Due to delays in reporting, CDPH will include preliminary Los Angeles County cases in order to effectively track the epidemiology of pertussis in the state effective August 19, 2019.

Notes:

- This report should be viewed as a preliminary "snapshot" of pertussis activity. Because data are preliminary, the information may be updated in later reports as additional case reports are received.

- Reports include probable and confirmed cases based on the Council of State and Territorial Epidemiologists (CSTE) case definition current at the year of report. Case counts reflect a case definition change in 2020.